



PARTS CATALOGUE

FZ150 (1PA1) INDONESIA



1M1PA-460E1

()

FZ150
PARTS CATALOGUE
©2012 by Yamaha Motor Co., Ltd.
1st edition, November 2012
All rights reserved.
Any reprinting or unauthorized use
without the written permission of
Yamaha Motor Co., Ltd.
is expressly prohibited.
Printed in Japan.

FOREWORD

This Parts Catalogue is related to the parts for the model(s) on the cover page. When you are ordering replacement parts, please refer to this Parts Catalogue and quote both part numbers and part names correctly.

1. Modifications or additions which have been made after the issue of the Parts Catalogue will be announced in the Parts News.

It is advisable that you make the necessary corrections to the Parts Catalogue according to the Parts News.

2. Abbreviations

The following abbreviations are used in this Parts Catalogue.

“UR” Use specified parts number.

“UN” Use as many as needed.

“AP” Alternate Parts

“LM” Locally Made (Parts need to be ordered locally)

“F#” Frame No. (Applicable machine No.)

“O/S” Over Size

3. The number of components for assembly

- Parts, which are to be supplied in an assembly, are listed with a dot (.) in front of the part name as shown below.
- The numeral appearing to the right of each component part indicates the quantity of parts for each assembly unit.

PART NO.	DESCRIPTION	Q'TY	REMARKS
2F5-83310-60	FRONT FLASHER LIGHT ASSY	2	
115-83311-60	.BULB (6V-18W)	1	

4. Applicable colours of graphics are represented in the “REMARKS” as shown below.

PART NO.	DESCRIPTION	Q'TY	REMARKS
2N4-24110-00-X5	FUEL TANK COMP.	2	MXR
3J1-24240-10	.GRAPHIC, FUEL TANK	1	FOR MXR

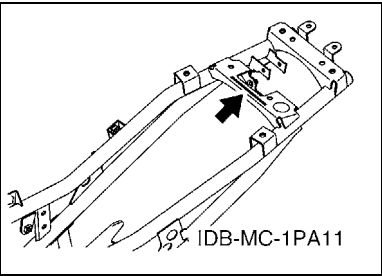
5. Note that the illustrations for reference in finding parts numbers are not to be used for assembling. When assembling, please use the applicable service manual.

6. The asterisk (*) before a reference number indicates modified items after the first edition.

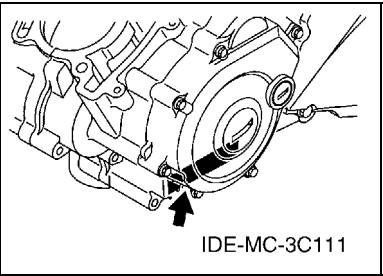
FOREWORD

7. Applicable Serial No.

Frame Serial No.



Engine Serial No.



8. Applicable Colour Code (The (*) mark shows Model colour.)

Abbreviation	Colour Name	Colour Code
DBNM8	DARK BLUISH GRAY METALLIC 8	0919
LYNM9(*)	LIGHT YELLOWISH GRAY ME 9	0752
RM7(*)	RED METALLIC 7	1218
SMX(*)	BLACK METALLIC X	0903
WM6(*)	WHITE METALLIC 6	1124
YB	YAMAHA BLACK	0033

9. Applicable Starting Serial No.

Frame Serial No.

Serial No.	Name Of Q'ty Column	Model Code

Engine Serial No.

Serial No.	Name Of Q'ty Column	Model Code

CONTENTS

ENGINE

CYLINDER HEAD	1
CRANKSHAFT & PISTON	2
VALVE	4
CAMSHAFT & CHAIN	5
WATER PUMP	6
RADIATOR & HOSE	7
OIL PUMP	8
INTAKE	9
EXHAUST	11
CRANKCASE	12
CRANKCASE COVER 1	13
STARTER CLUTCH	14
CLUTCH	15
TRANSMISSION	17
SHIFT CAM & FORK	19
SHIFT SHAFT	20

CHASSIS

FRAME	21
FENDER	22
SIDE COVER	23
REAR ARM & SUSPENSION	25
STEERING	26
FRONT FORK	27
FUEL TANK	29
SEAT	33
FRONT WHEEL	34
FRONT BRAKE CALIPER	35
REAR WHEEL	36
REAR BRAKE CALIPER	38
STEERING HANDLE & CABLE	39
FRONT MASTER CYLINDER	40
STAND & FOOTREST	41
REAR MASTER CYLINDER	43
GENERATOR	44
STARTING MOTOR	45
FLASHER LIGHT	46
METER	48
HEADLIGHT	49
TAILLIGHT	51
HANDLE SWITCH & LEVER	52

ELECTRICAL 1	53
ELECTRICAL 2	54
OPTIONAL PARTS 1	56
OPTIONAL PARTS 2	58

INDEX

NUMERICAL INDEX	59
-----------------------	----

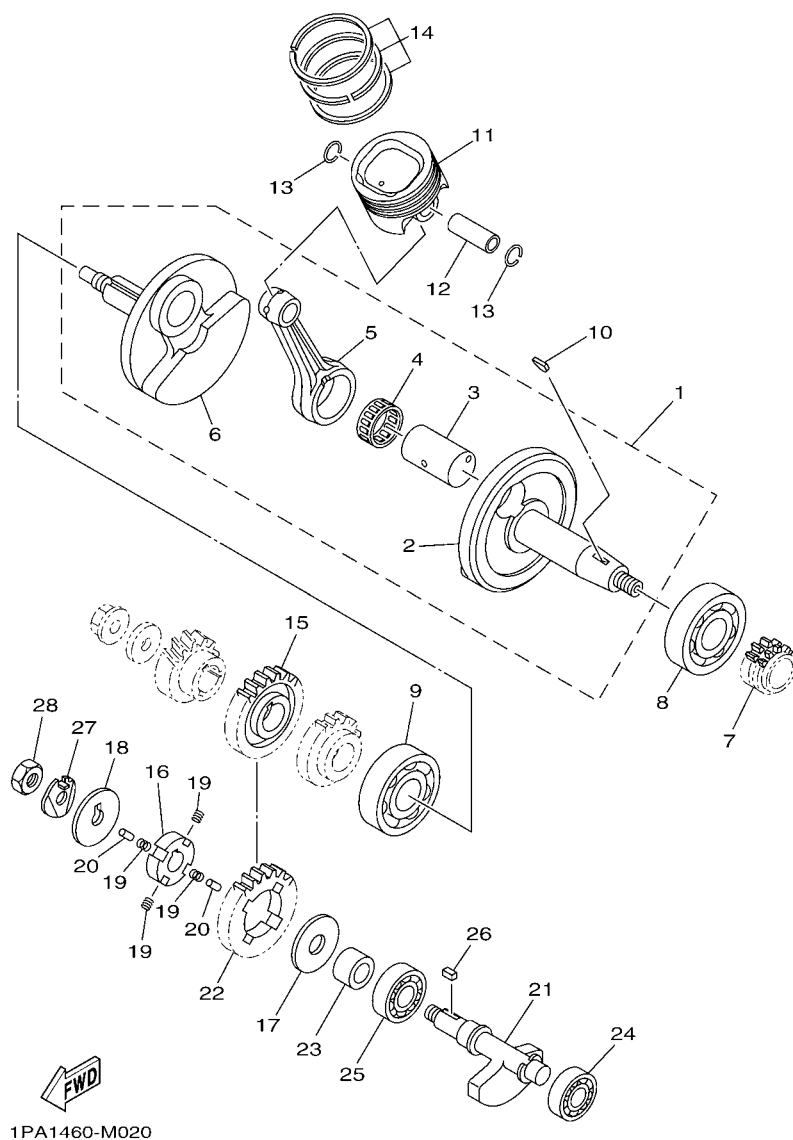


FIG. 2 CRANKSHAFT & PISTON

REF. NO.	PART NO.	DESCRIPTION	1PA1				REMARKS
1	3C1-E1400-10	CRANKSHAFT ASSY	1				
2	3C1-E1412-10	.CRANK 1	1				
3	3C1-11681-10	.PIN, CRANK 1	1				
4	93310-528YD	.BEARING	1				
5	3C1-E1651-11	.ROD, CONNECTING	1				
6	3C1-E1422-10	.CRANK 2	1				
7	3C1-E1549-00	SPROCKET, CAM CHAIN	1				
8	93306-305XJ	BEARING	1				UR
	93306-305YF	BEARING	1				UR
9	93306-305XK	BEARING	1				UR
	93306-305X7	BEARING	1				UR
10	90280-03017	KEY, WOODRUFF	1				
11	3C1-E1631-11	PISTON (STD)	1				
12	3C1-E1633-00	PIN, PISTON	1				
13	93450-16115	CIRCLIP	2				
14	1PA-E1603-00	PISTON RING SET (STD)	1				
15	3C1-11536-00	GEAR, DRIVE	1				
16	3C1-E1496-00	BOSS, BUFFER	1				
17	90201-15821	WASHER, PLATE	1				
18	90214-10800	WASHER, CLAW	1				
19	90501-16800	SPRING, COMPRESSION	4				
20	93604-08800	PIN, DOWEL	2				
21	1PA-E1454-00	WEIGHT 1	1				
22	3C1-11531-00	GEAR, BALANCE WEIGHT	1				
23	90387-15810	COLLAR	1				
24	93306-252XU	BEARING	1				UR
	93306-252Y9	BEARING	1				UR

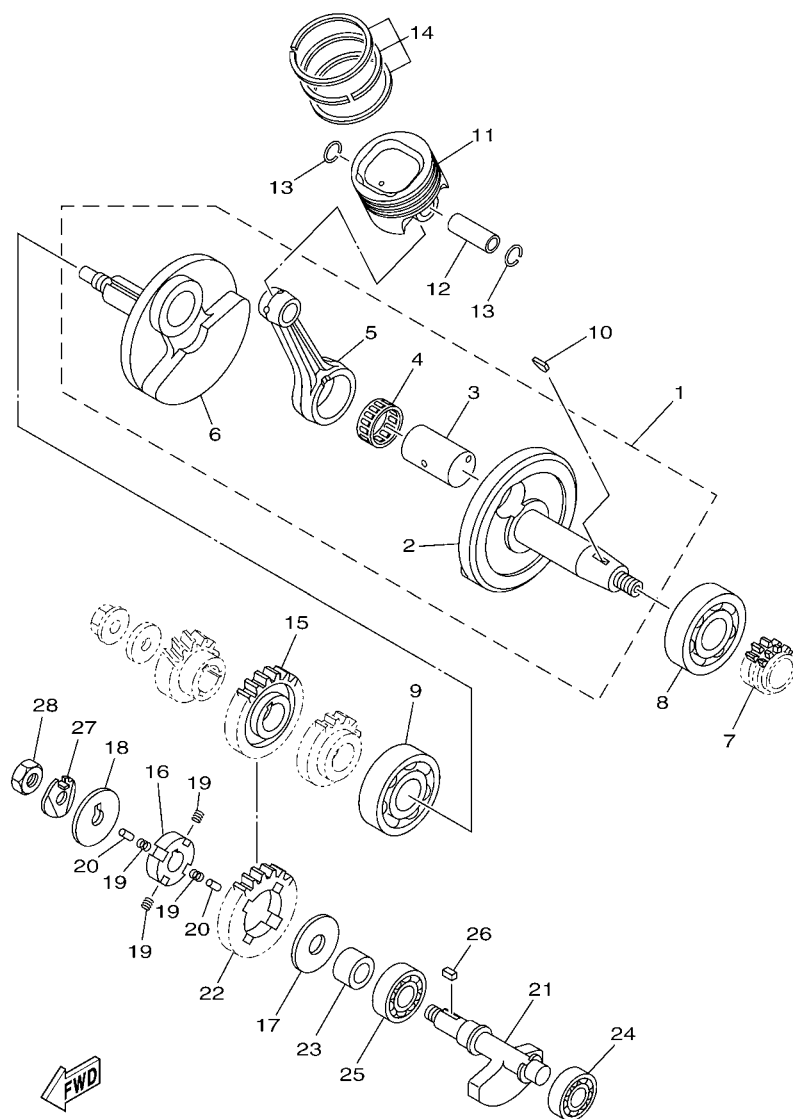


FIG. 2 CRANKSHAFT & PISTON

[illegible]

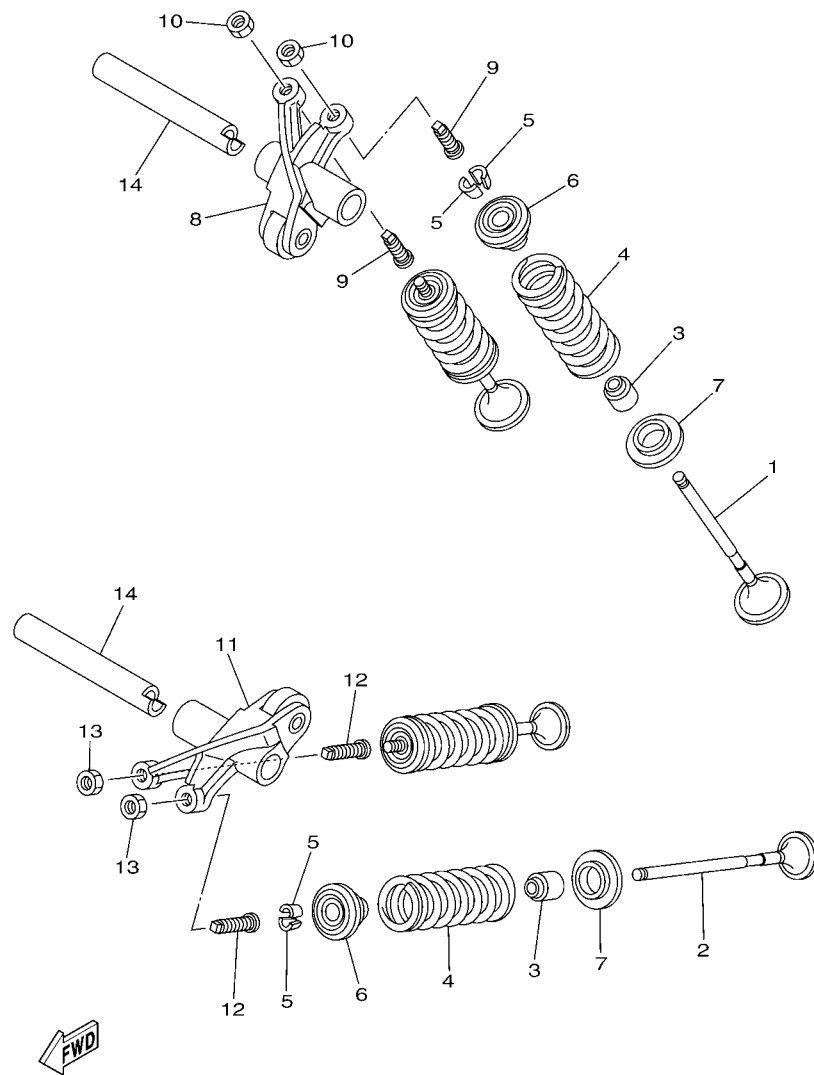
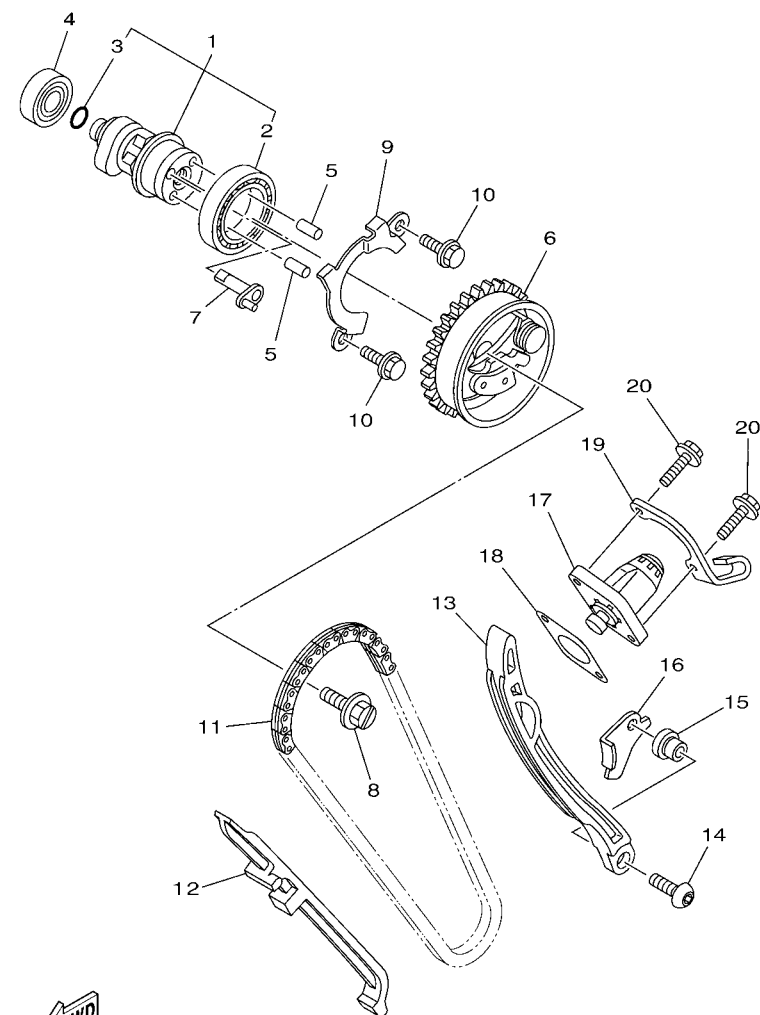


FIG. 3 VALVE




 1PA1460-M040

FIG. 4 CAMSHAFT & CHAIN

REF. NO.	PART NO.	DESCRIPTION	1PA1				REMARKS
1	3C1-E2170-00	CAMSHAFT ASSY 1	1				
2	93306-906Y4	.BEARING	1				
3	93210-09806	.O-RING	1				
4	93306-001X6	BEARING	1				
5	93605-06800	PIN, DOWEL	2				
6	1PA-E2280-00	DECOMPRESSION ASSY	1				
7	1S7-E2288-00	CAM, DECOMPRESSION	1				
8	5YP-E2157-00	BOLT	1				
9	1S7-E111F-00	PLATE	1				
10	95022-06010	BOLT, FLANGE	2				
11	94568-F9096	CHAIN	1				
12	1PA-E2231-00	GUIDE, STOPPER 1	1				
13	1PA-E2241-00	GUIDE, STOPPER 2	1				
14	90149-06829	SCREW	1				
15	3C1-E5598-00	COLLAR	1				
16	3C1-E2256-00	COVER, CHAIN	1				
17	5MX-E2210-10	TENSIONER ASSY, CAM CHAIN	1				
18	5MX-E2213-01	GASKET, TENSIONER CASE	1				
19	3C1-E5441-00	HOLDER, CLUTCH CABLE	1				
20	95022-06020	BOLT, FLANGE	2				

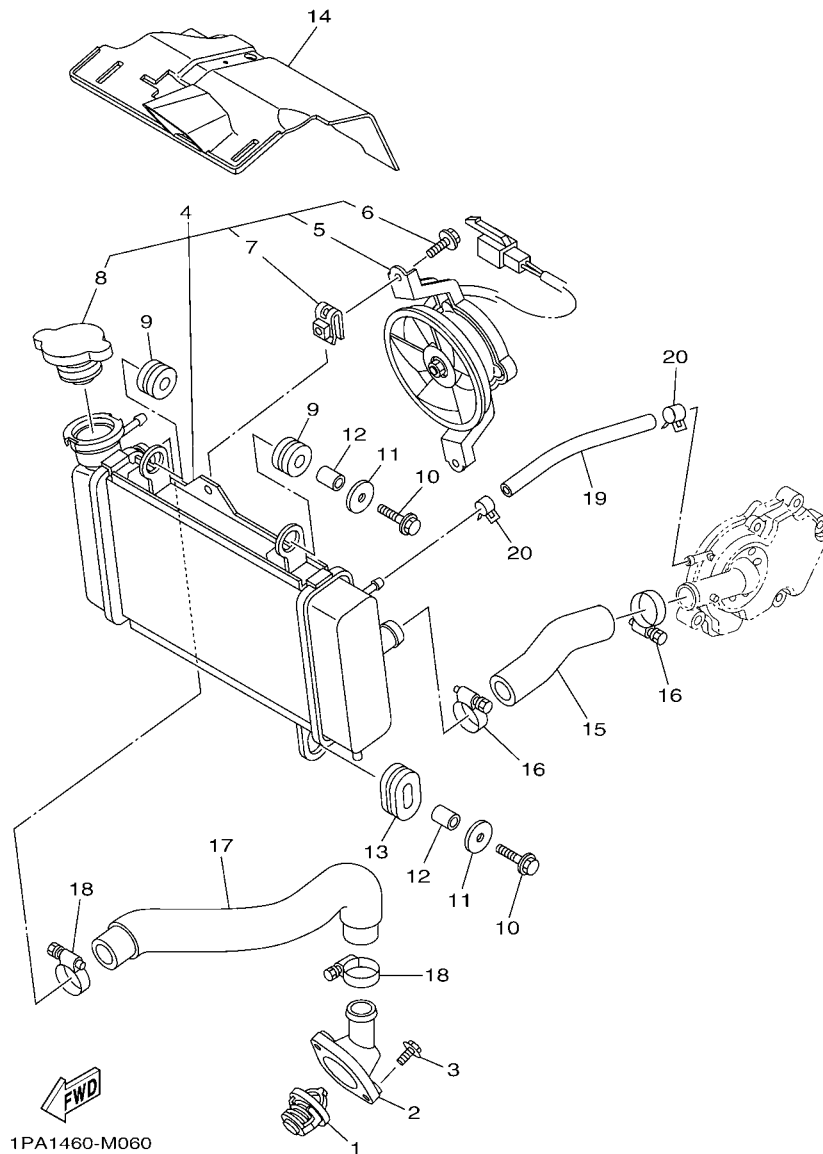


FIG. 6 RADIATOR & HOSE

REF. NO.	PART NO.	DESCRIPTION	1PA1				REMARKS
1	5YP-12411-00	THERMOSTAT	1				
2	1S7-E2413-00	COVER, THERMOSTAT	1				
3	95022-06020	BOLT, FLANGE	2				
4	3C1-E240A-10	RADIATOR ASSY	1				
5	1S7-E2405-00	.BLOWER ASSY	1				
6	5YP-E2675-00	.BOLT, BLOWER HOLDING	2				
7	5YP-E2671-00	.NUT 1	2				
8	5YP-E2462-00	.CAP, RADIATOR	1				
9	90480-15363	GROMMET	2				
10	95822-06025	BOLT, FLANGE	2				
11	90201-06880	WASHER, PLATE	2				
12	90387-06144	COLLAR	2				
13	90480-01803	GROMMET	1				
14	1PA-E2467-00	COVER, RADIATOR	1				
15	3C1-E2481-00	PIPE 1	1				
16	90450-27805	HOSE CLAMP ASSY	2				
17	3C1-E2482-00	PIPE 2	1				
18	90450-27805	HOSE CLAMP ASSY	2				
19	90445-12804	HOSE	1				
20	90467-10805	CLIP	2				

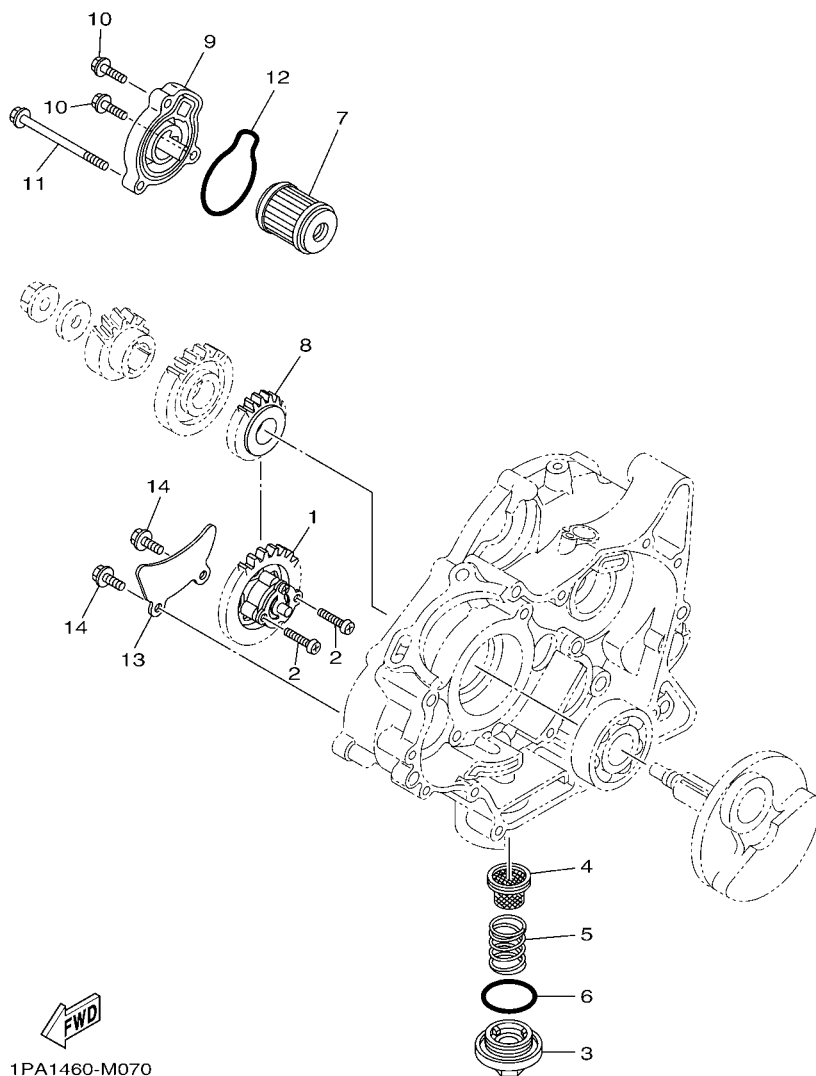
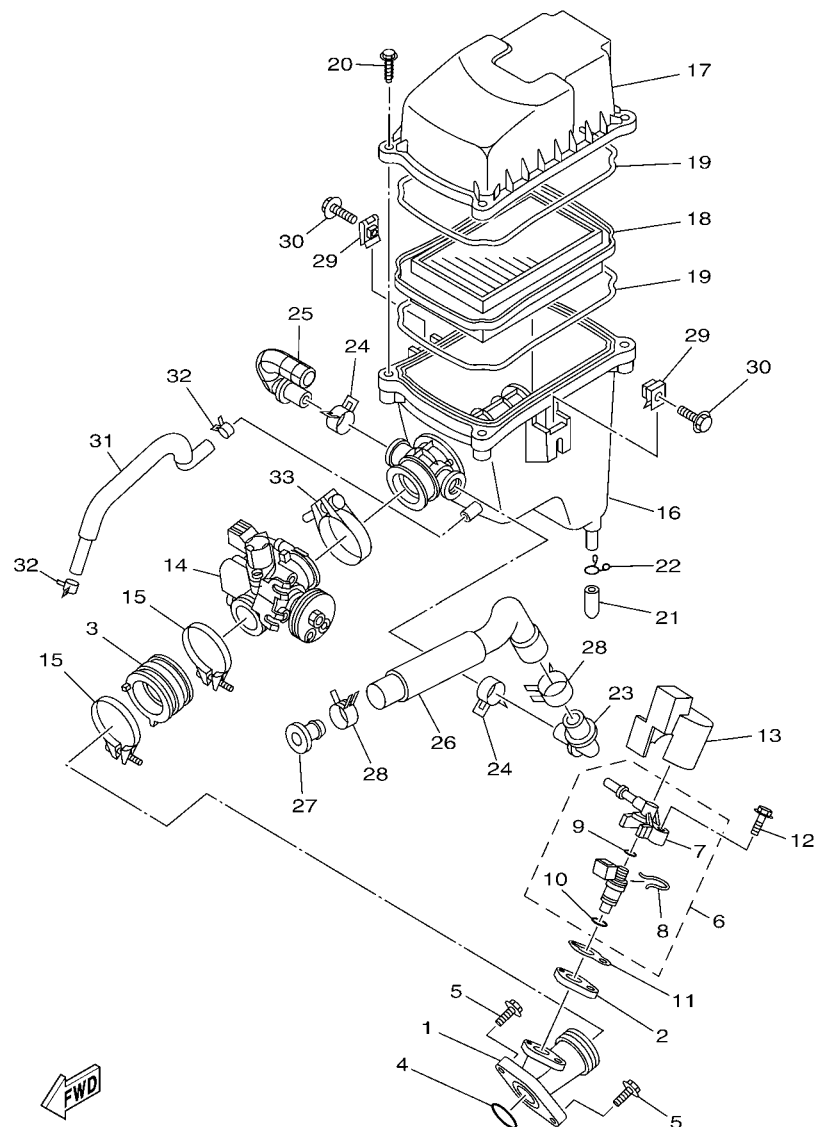


FIG. 7 OIL PUMP

[illegible]



1PA1460-M080

FIG. 8 INTAKE

REF. NO.	PART NO.	DESCRIPTION	1PA1				REMARKS
1	1PA-E3585-00	MANIFOLD	1				
2	1PA-E3556-00	GASKET, MANIFOLD	1				
3	1PA-E3635-00	JOINT, INTAKE 1	1				
4	93210-32807	O-RING	1				
5	95022-06020	BOLT, FLANGE	2				
6	1PA-E3770-00	INJECTOR ASSY	1				
7	54P-E3938-00	.PIPE	1				
8	54P-E4137-00	.CLIP	1				
9	54P-E4147-00	.O-RING	1				
10	5CA-E4147-00	.O-RING	1				
11	1PA-E3557-00	GASKET	1				
12	95812-06030	BOLT, FLANGE	1				
13	1PA-E3767-00	CAP, INJECTOR	1				
14	1PA-E3750-00	THROTTLE BODY ASSY	1				
15	90450-48803	HOSE CLAMP ASSY	2				
16	1PA-WE441-00	AIR CLEANER CASE COMP.	1				
17	1PA-E4412-00	CAP, CLEANER CASE 1	1				
18	1PA-E4450-00	ELEMENT ASSY, AIR CLEANER	1				
19	1PA-E4452-00	SEAL	2				
20	90163-05803	SCREW, TAPPING	4				
21	5TL-E443E-00	PIPE, DRAIN	1				
22	90467-12800	CLIP	1				
23	3C1-E4485-00	PIPE, JOINT	1				
24	90467-20804	CLIP	2				
25	3C1-E4419-00	PIPE	1				
26	3C1-E441J-00	PIPE, SILENCER	1				
27	90338-16008	PLUG	1				

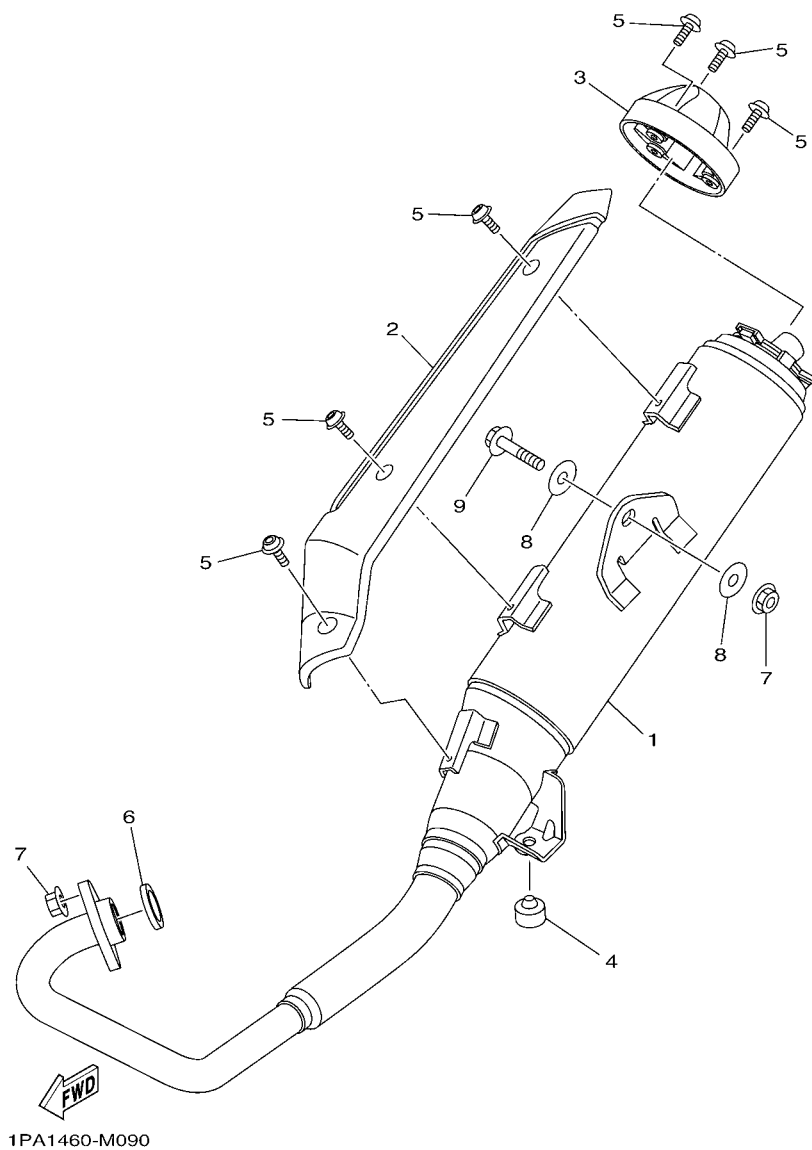


FIG. 9 EXHAUST

[illegible]

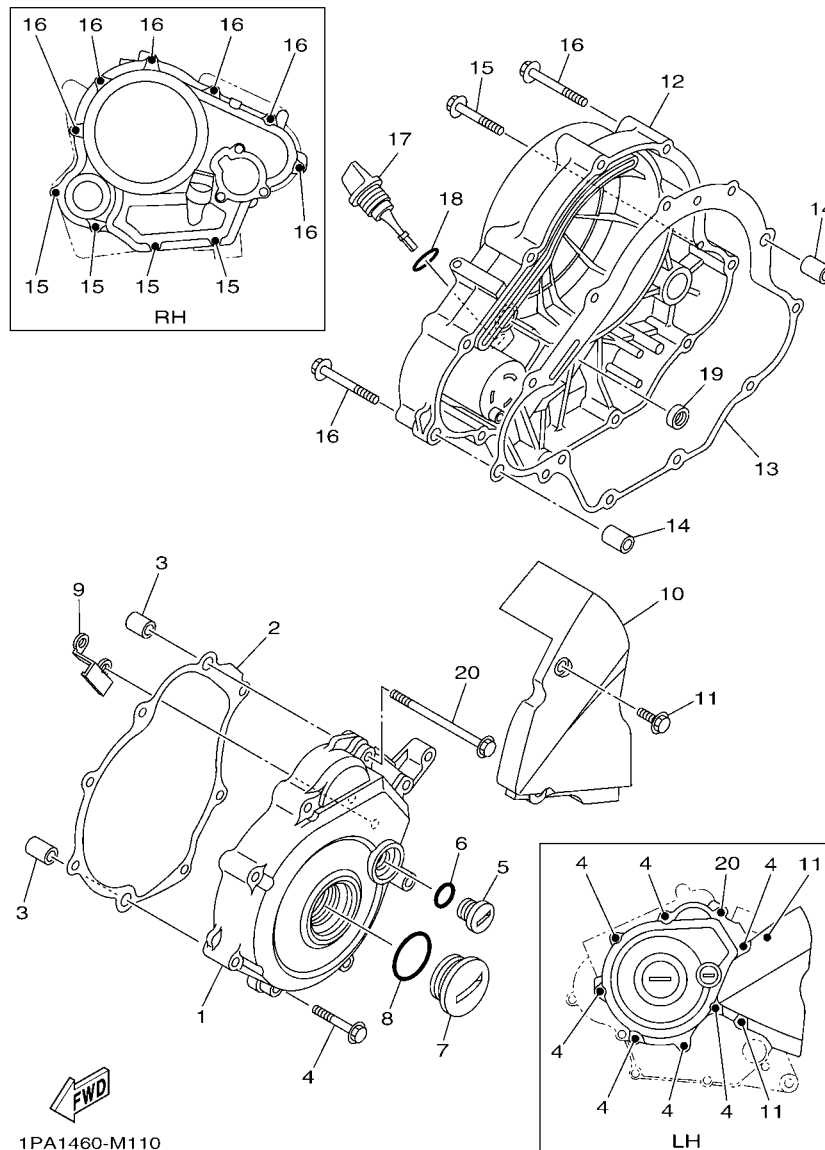


FIG. 11 CRANKCASE COVER 1

REF. NO.	PART NO.	DESCRIPTION	1PA1				REMARKS
1	1PA-E5411-00	COVER, CRANKCASE 1	1				
2	3C1-E5451-00	GASKET, CRANKCASE COVER 1	1				
3	91810-14809	PIN, DOWEL	2				
4	95022-06040	BOLT, FLANGE	7				
5	90340-14805	PLUG, STRAIGHT SCREW	1				
6	93210-148F8	O-RING	1				
7	90340-32810	PLUG, STRAIGHT SCREW	1				
8	93210-328G3	O-RING	1				
9	1PA-E5113-00	PLATE	1				
10	3C1-E5418-00	COVER, CHAIN CASE	1				
11	95022-06016	BOLT, FLANGE	2				
12	3C1-E5421-00	COVER, CRANKCASE 2	1				
13	3C1-E5461-00	GASKET, CRANKCASE COVER 2	1				
14	91810-14809	PIN, DOWEL	2				
15	95022-06040	BOLT, FLANGE	4				
16	95022-06050	BOLT, FLANGE	6				
17	3C1-E5362-00	PLUG, OIL LEVEL	1				
18	93210-198F9	O-RING	1				
19	93101-10843	OIL SEAL	1				
20	95022-06090	BOLT, FLANGE	1				

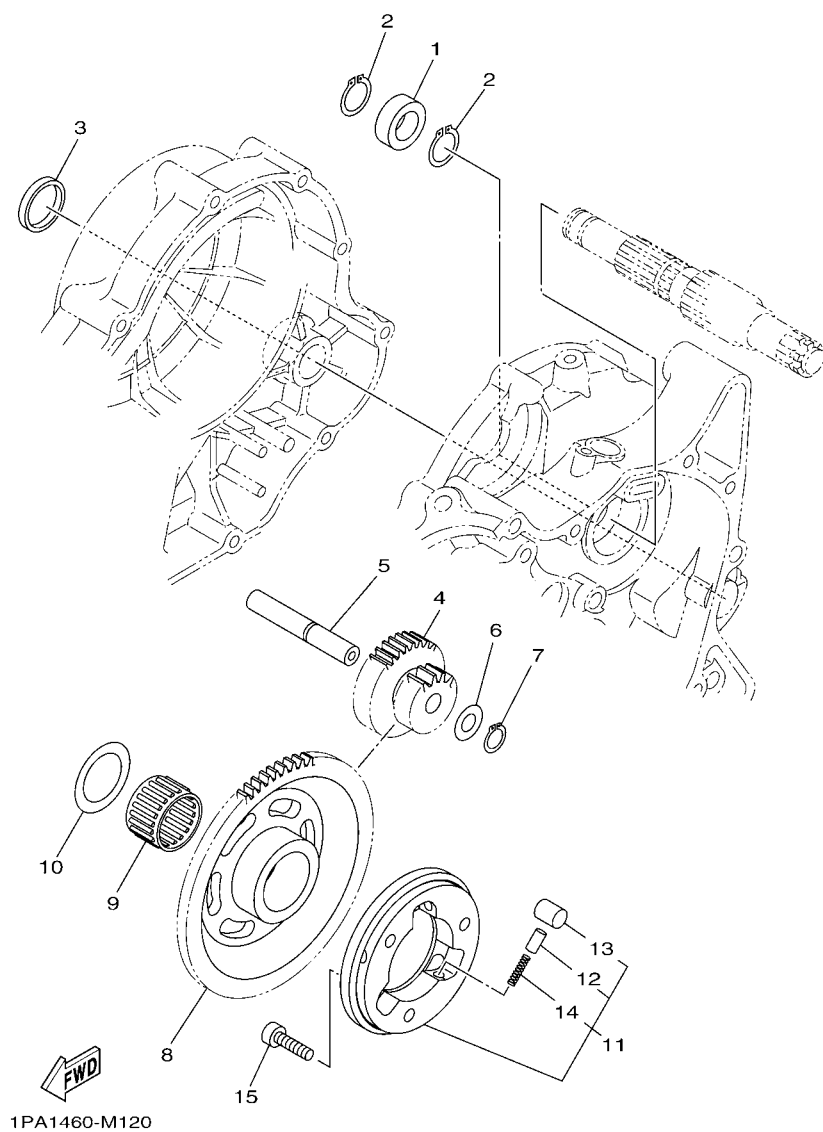


FIG. 12 STARTER CLUTCH

[illegible]

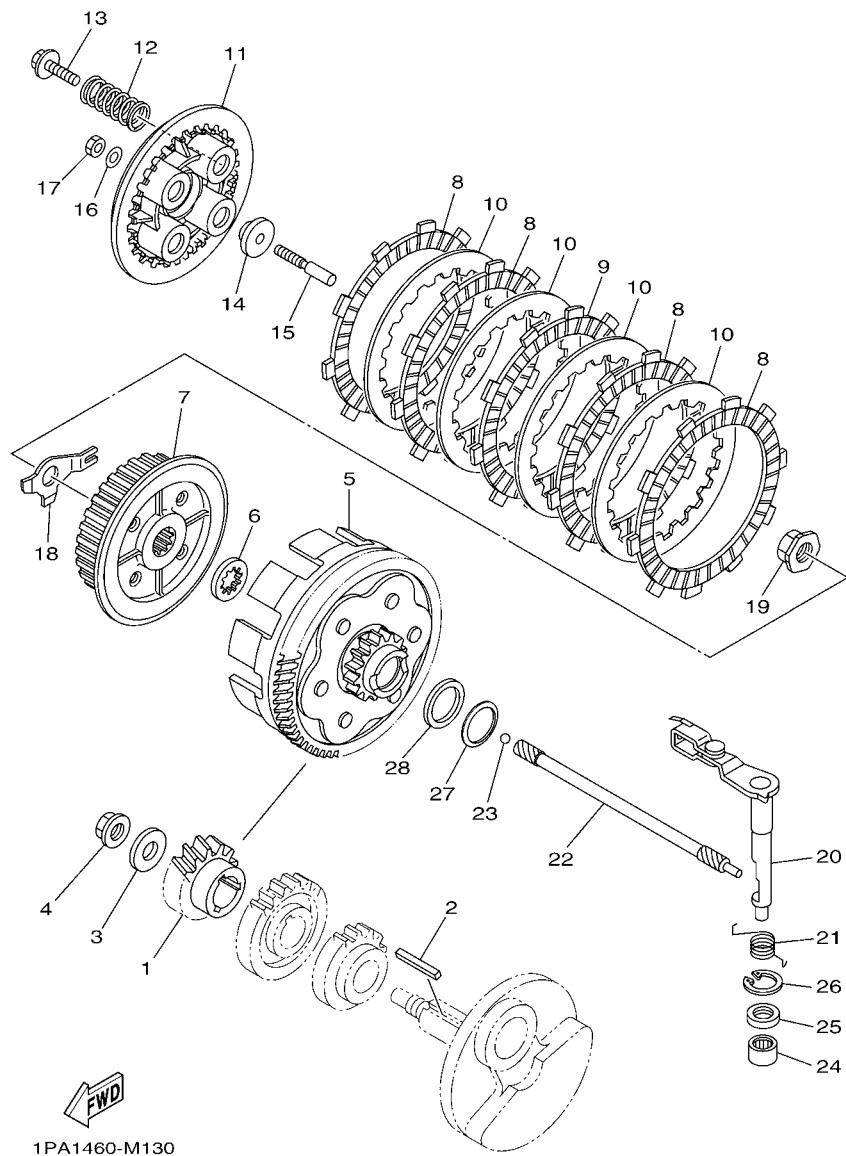


FIG. 13 CLUTCH

REF. NO.	PART NO.	DESCRIPTION	1PA1				REMARKS
1	3C1-E6111-00	GEAR, PRIMARY DRIVE	1				
2	3C1-16193-00	KEY, FEATHER	1				
3	90201-12019	WASHER, PLATE	1				
4	90179-12802	NUT	1				
5	1PA-E6150-00	PRIMARY DRIVEN GEAR COMP.	1				
6	50C-E6154-00	PLATE, THRUST 1	1				
7	2S6-E6371-02	BOSS, CLUTCH	1				
8	50C-E6321-00	PLATE, FRICTION	4				
9	1PA-E6331-00	PLATE, FRICTION 2	1				
10	2S6-E6324-00	PLATE, CLUTCH 1	4				
11	50C-E6351-00	PLATE, PRESSURE 1	1				
12	1S7-E6333-00	SPRING, CLUTCH 1	4				
13	1S7-E6777-00	BOLT	4				
14	3C1-E6358-00	PLATE, PUSH	1				
15	3C1-E6356-10	ROD, PUSH 1	1				
16	3C1-E6144-00	WASHER	1				
17	3C1-E6344-00	NUT, ADJUSTING	1				
18	2S6-E6135-00	WASHER, LOCK	1				
19	90179-14001	NUT	1				
20	3C1-E6380-01	PUSH LEVER ASSY	1				
21	3C1-E6345-00	SPRING, RETURN	1				
22	1PA-E6357-00	ROD, PUSH 2	1				
23	93505-16844	BALL	1				
24	93315-112Y8	BEARING	1				
25	93102-12862	OIL SEAL	1				
26	99009-20500	CIRCLIP	1				
27	90208-20003	WASHER, CONICAL SPRING	1				

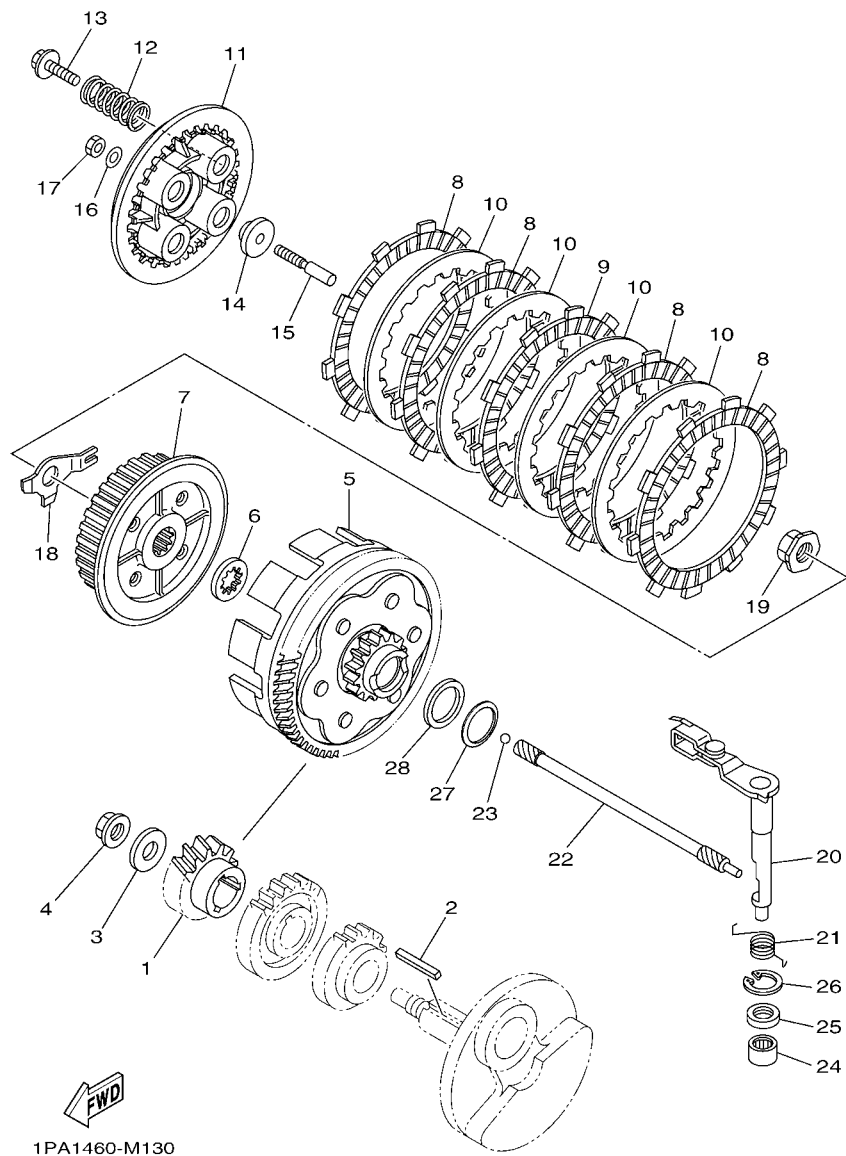


FIG. 13 CLUTCH

[illegible]

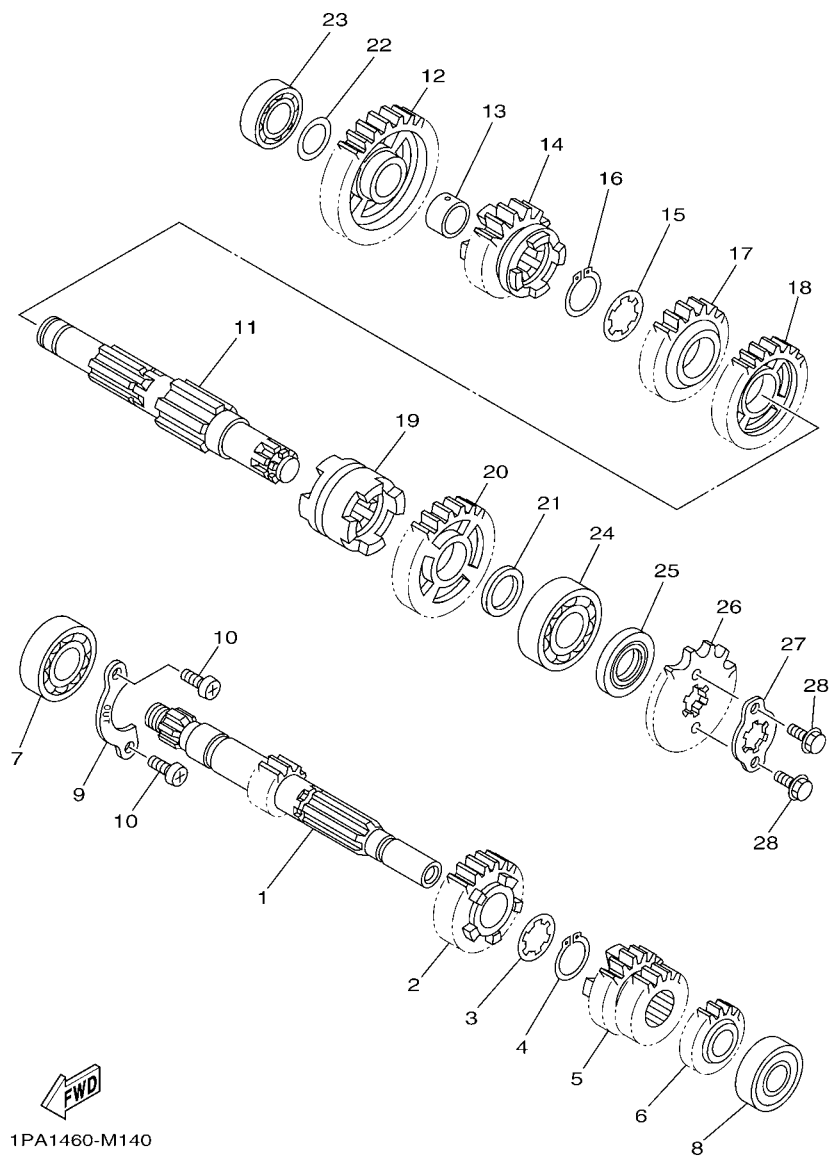


FIG. 14 TRANSMISSION

REF. NO.	PART NO.	DESCRIPTION	1PA1				REMARKS
1	3C1-E7411-10	AXLE, MAIN (12T)	1				
2	1PA-E7151-00	GEAR, 5TH PINION (23T)	1				
3	90209-17285	WASHER	1				
4	93410-20038	CIRCLIP	1				
5	3C1-E7131-00	GEAR, 3RD PINION (21T/21T)	1				
6	3C1-E7121-00	GEAR, 2ND PINION (16T)	1				
7	93306-054YM	BEARING	1				
8	93306-252YL	BEARING	1				
9	3C1-E7471-00	PLATE, COVER	1				
10	98512-06012	SCREW, PAN HEAD	2				
11	3C1-E7402-00	DRIVE AXLE ASSY	1				
12	3C1-E7211-00	GEAR, 1ST WHEEL (34T)	1				
13	90387-17804	COLLAR	1				
14	1PA-E7251-00	GEAR, 5TH WHEEL (22T)	1				
15	90209-18208	WASHER	1				
16	93410-22039	CIRCLIP	1				
17	3C1-E7241-00	GEAR, 4TH WHEEL (24T)	1				
18	3C1-E7231-00	GEAR, 3RD WHEEL (30T)	1				
19	3C1-E7285-00	CLUTCH, DOG	1				
20	3C1-E7221-00	GEAR, 2ND WHEEL (30T)	1				
21	90201-20814	WASHER, PLATE	1				
22	90201-173F4	WASHER, PLATE	1				
23	93306-003YV	BEARING	1				UR
	93306-003Y7	BEARING	1				UR
24	93306-204YS	BEARING	1				
25	93102-20892	OIL SEAL	1				
26	93822-14815	SPROCKET, DRIVE (14T)	1				

[illegible]

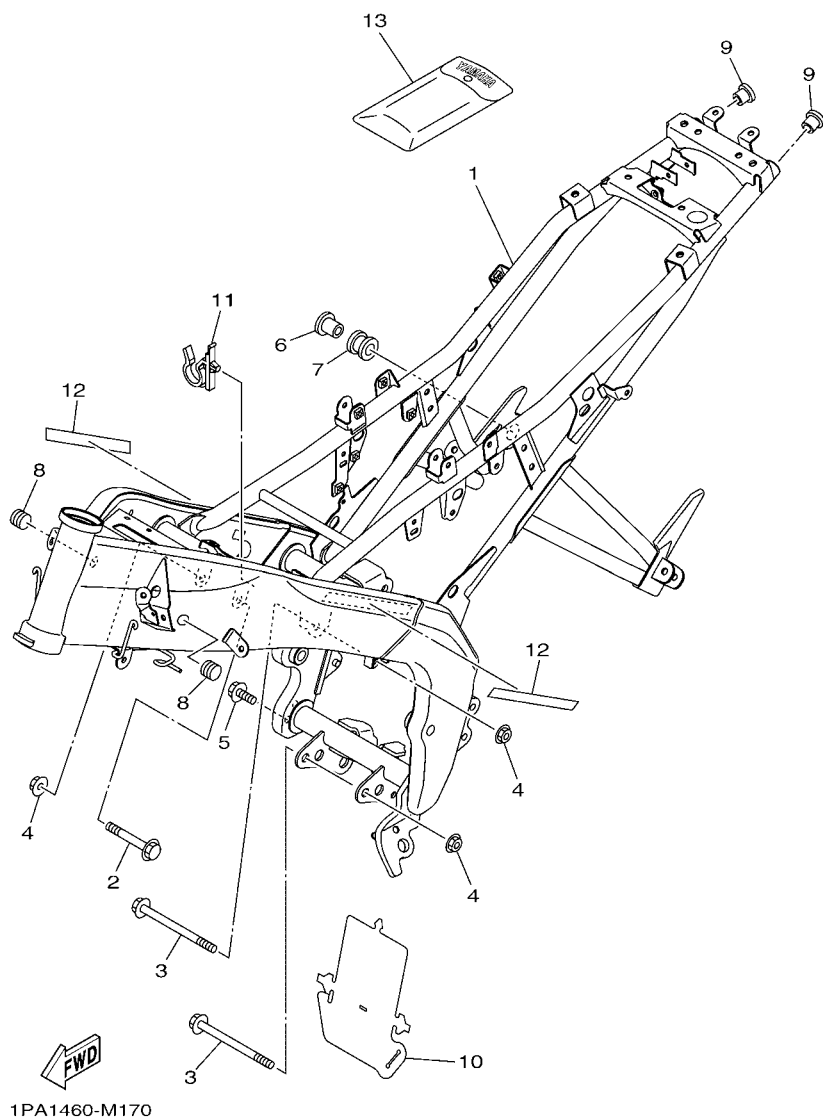


FIG. 17 FRAME

REF. NO.	PART NO.	DESCRIPTION	IPA 1				REMARKS
1	1PA-F1110-00	FRAME COMP.	1				
2	90105-10855	BOLT, FLANGE	1				
3	90105-10886	BOLT, FLANGE	2				
4	90179-10805	NUT	3				
5	95812-08012	BOLT, FLANGE	2				
6	90387-08813	COLLAR	1				
7	1PA-E4747-00	DAMPER, MUFFLER	1				
8	90338-15802	PLUG	2				
9	90338-18122	PLUG	2				
10	3C1-F2327-00	MUD GUARD 1	1				
11	3C1-F1338-00	CLAMP	1				
12	3C1-F118E-00	EMBLEM 1	2				
13	1PA-F8100-00	TOOL KIT	1				

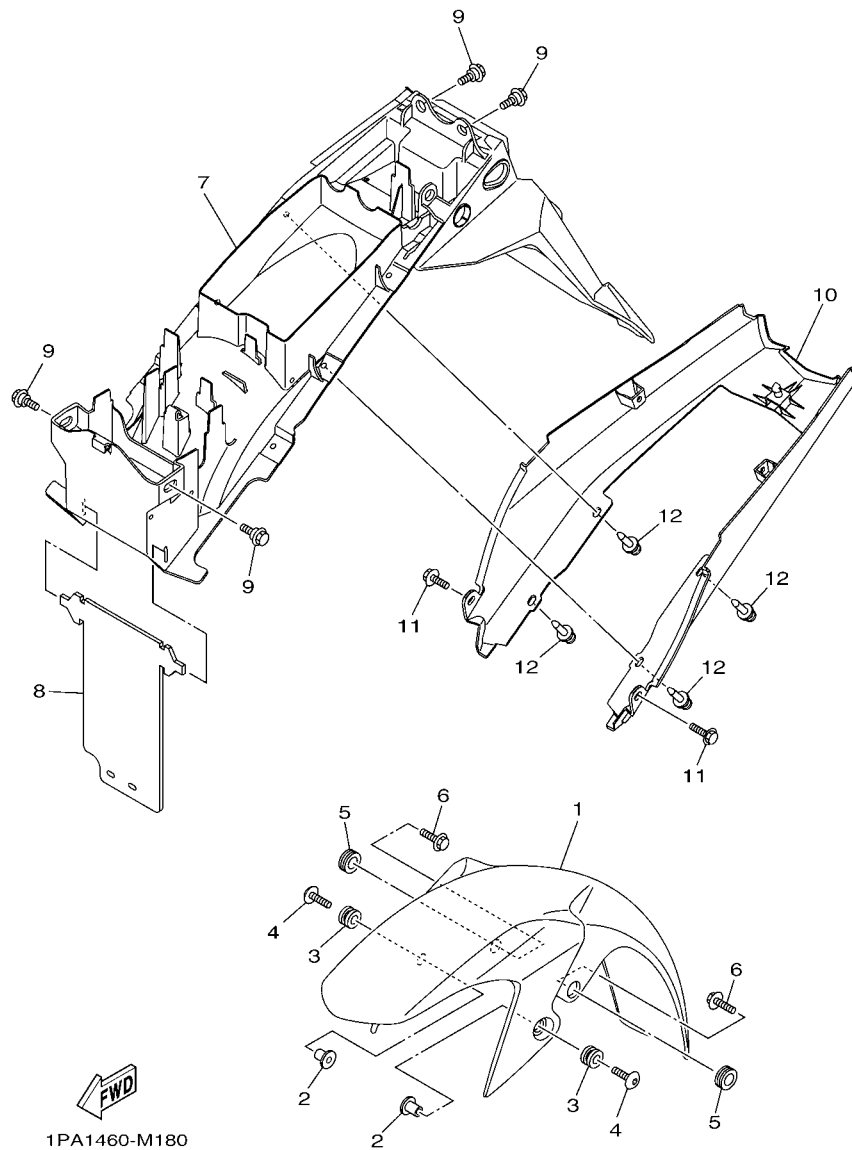


FIG. 18 FENDER

REF. NO.	PART NO.	DESCRIPTION	1PA 1				REMARKS
1	1PA-F1511-00-3X	FENDER, FRONT	1				SMX FOR RM7,LYNM9
	1PA-F1511-00-4X	FENDER, FRONT	1				DBNM8 FOR SMX
	1PA-F1511-00-5X	FENDER, FRONT	1				RM7 FOR WM6
2	90387-06205	COLLAR	2				
3	90480-12805	GROMMET	2				
4	90111-06137	BOLT,HEX. SOCKET BUTTON	2				
5	90480-17801	GROMMET	2				
6	90119-068B9	BOLT, WITH WASHER	2				
7	1PA-F1611-00	FENDER, REAR	1				
8	1PA-F1621-00	FLAP	1				
9	90109-06172	BOLT	4				
10	1PA-F163A-00	COVER, REAR FENDER 1	1				
11	90119-06137	BOLT, WITH WASHER	2				
12	90269-06812	RIVET	4				

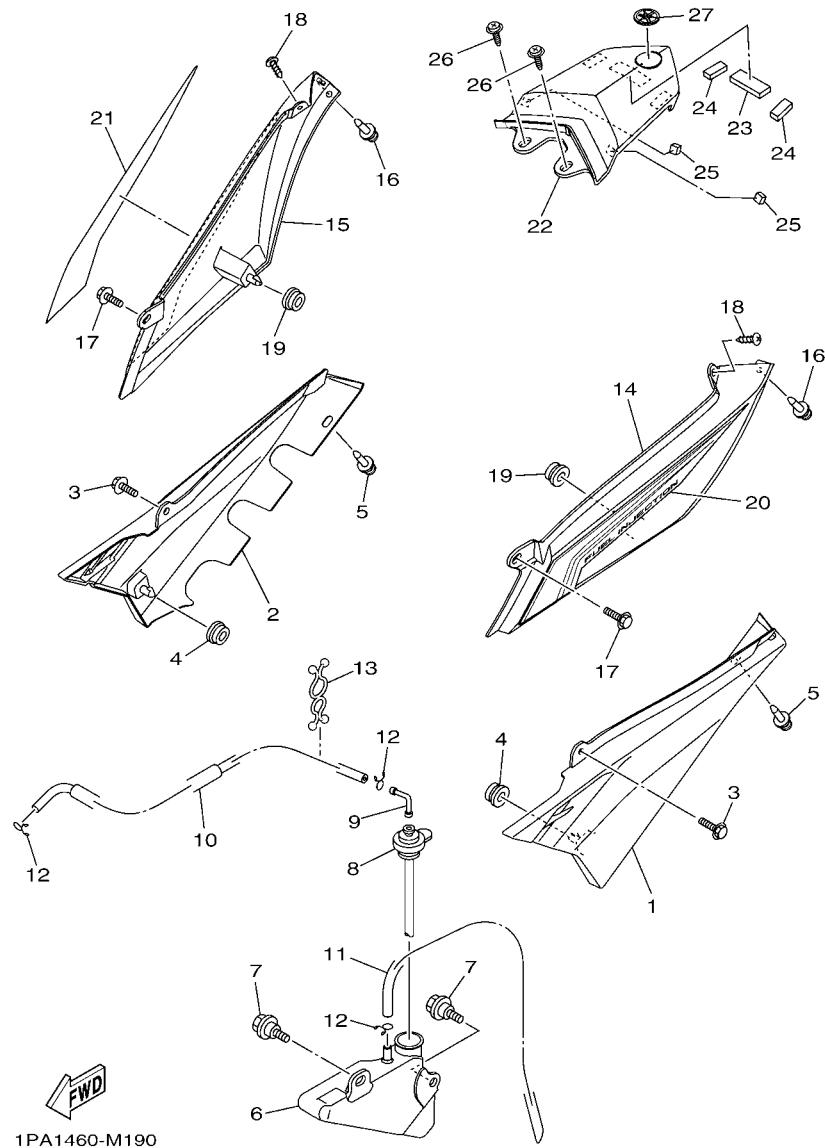


FIG. 19 SIDE COVER

REF. NO.	PART NO.	DESCRIPTION	1PA1				REMARKS
1	1PA-F1711-00	COVER, SIDE 1	1				
2	1PA-F1721-00	COVER, SIDE 2	1				
3	90119-06137	BOLT, WITH WASHER	2				
4	90480-01558	GROMMET	2				
5	90269-06812	RIVET	2				
6	1PA-F1871-00	TANK, RECOVERY	1				
7	90109-06212	BOLT	2				
8	3C1-F1875-00	CAP	1				
9	3C1-F1828-00	ELBOW	1				
10	90445-08831	HOSE	1				
11	90445-08832	HOSE	1				
12	90467-08003	CLIP	3				
13	90464-14807	CLAMP	1				
14	1PA-F1731-00-P0	COVER, SIDE 3	1				UR FOR RM7
	1PA-F1731-00-P1	COVER, SIDE 3	1				UR FOR SMX
	1PA-F1731-00-P2	COVER, SIDE 3	1				UR FOR WM6
	1PA-F1731-00-P3	COVER, SIDE 3	1				UR FOR LYNM9
15	1PA-F1741-00-P0	COVER, SIDE 4	1				UR FOR RM7
	1PA-F1741-00-P1	COVER, SIDE 4	1				UR FOR SMX
	1PA-F1741-00-P2	COVER, SIDE 4	1				UR FOR WM6
	1PA-F1741-00-P3	COVER, SIDE 4	1				UR FOR LYNM9
16	90269-06812	RIVET	2				
17	90119-06137	BOLT, WITH WASHER	2				
18	97702-50012	SCREW, TAPPING	2				
19	90480-01558	GROMMET	2				
20	1PA-F17F1-00	GRAPHIC, 1	1				UR FOR RM7
	1PA-F17F1-10	GRAPHIC, 1	1				UR FOR SMX

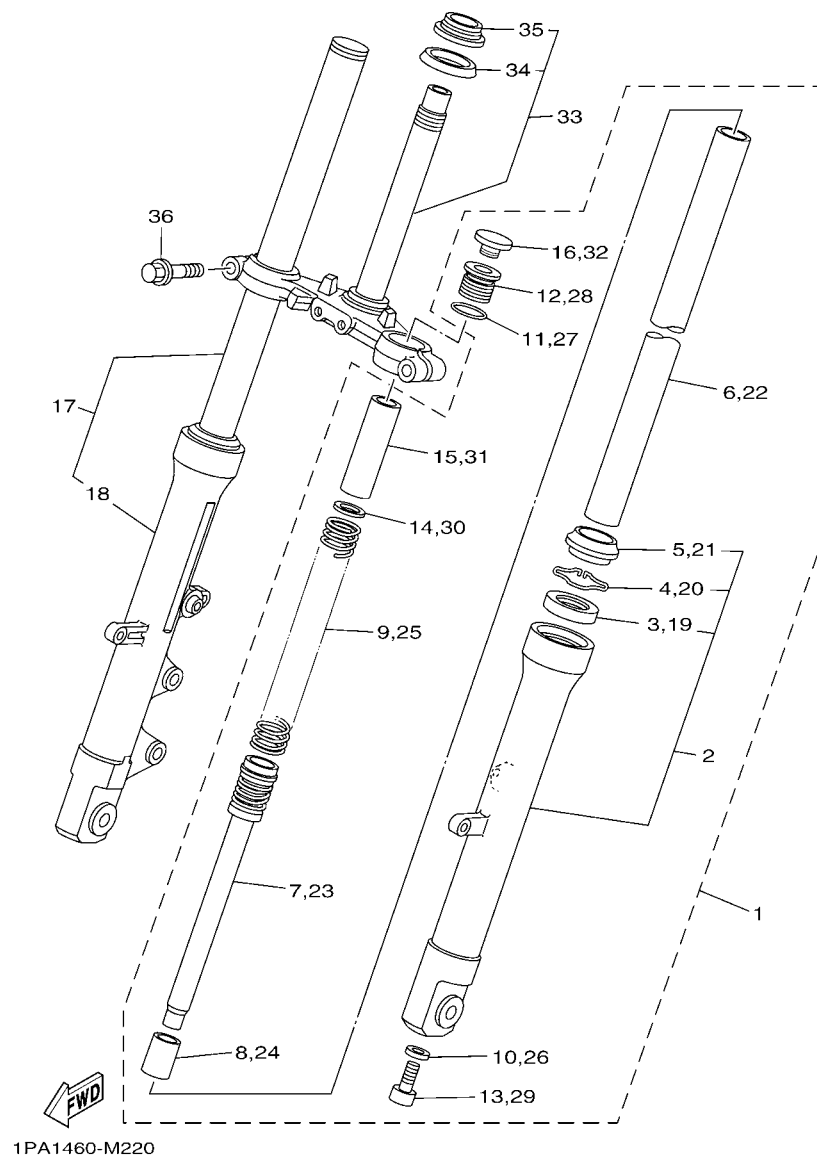


FIG. 22 FRONT FORK

REF. NO.	PART NO.	DESCRIPTION	1PA1				REMARKS
1	1PA-F3102-00	FRONT FORK ASSY (L.H)	1				
2	1PA-F3126-00	.TUBE, OUTER (LEFT)	1				
3	5BP-F3145-00	..OIL SEAL	1				
4	22W-F3156-L0	..RING, SNAP	1				
5	5BP-F3144-00	..SEAL, DUST	1				
6	1PA-F3110-00	.INNER TUBE COMP.1	1				
7	1PA-F3170-00	.CYLINDER COMP., FRONT FORK	1				
8	2JK-F3173-00	.SPINDLE, TAPER	1				
9	1PA-F3141-00	.SPRING, FRONT FORK	1				
10	509-F3158-L0	.GASKET	1				
11	2JK-F3114-00	.GASKET	1				
12	5BP-F3111-10	.BOLT, CAP	1				
13	31B-F3181-00	.BOLT, HEXAGON SOCKET HEAD	1				
14	2JK-F3149-01	.WASHER, SPRING UPPER	1				
15	5BP-F3118-10	.SPACER	1				
16	2N4-23168-00	.PLUG	1				
17	1PA-F3103-00	FRONT FORK ASSY (R.H)	1				
18	1PA-F3136-00	.TUBE, OUTER (RIGHT)	1				
19	5BP-F3145-00	..OIL SEAL	1				
20	22W-F3156-L0	..RING, SNAP	1				
21	5BP-F3144-00	..SEAL, DUST	1				
22	1PA-F3110-00	.INNER TUBE COMP.1	1				
23	1PA-F3170-00	.CYLINDER COMP., FRONT FORK	1				
24	2JK-F3173-00	.SPINDLE, TAPER	1				
25	1PA-F3141-00	.SPRING, FRONT FORK	1				
26	509-F3158-L0	.GASKET	1				
27	2JK-F3114-00	.GASKET	1				

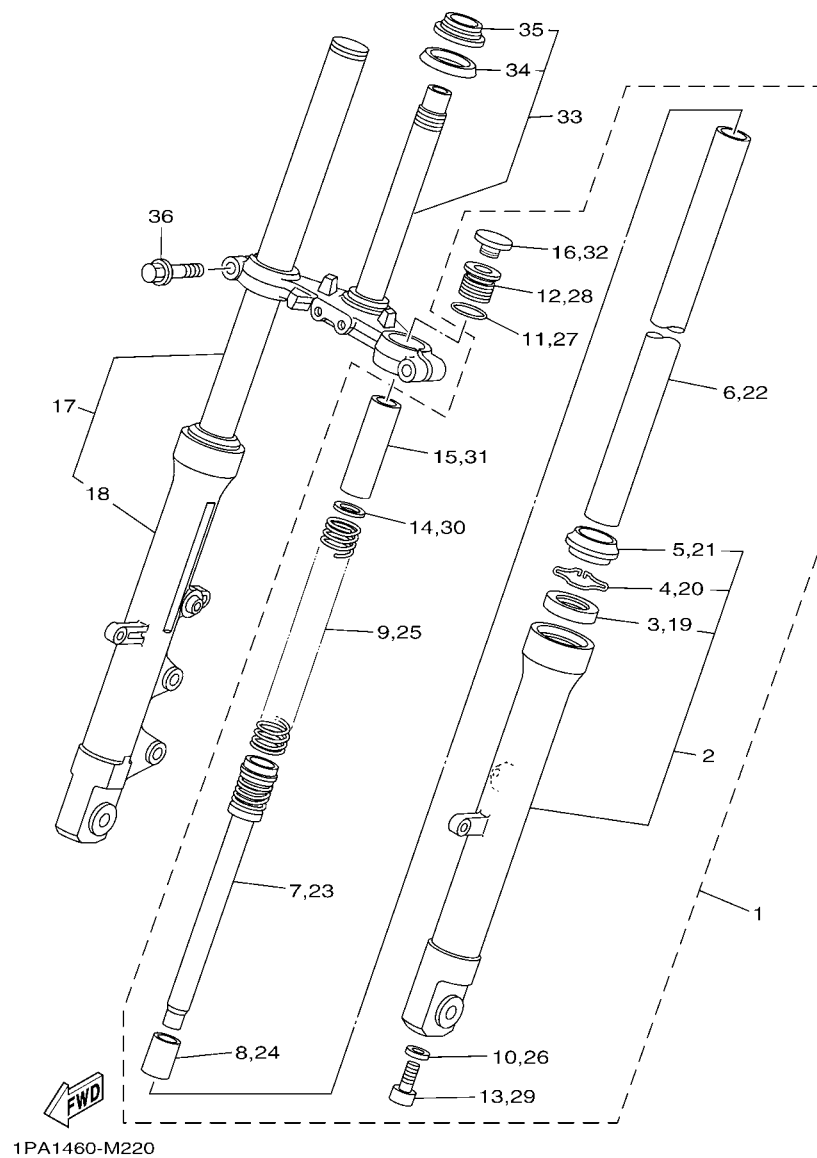


FIG. 22 FRONT FORK

[illegible]

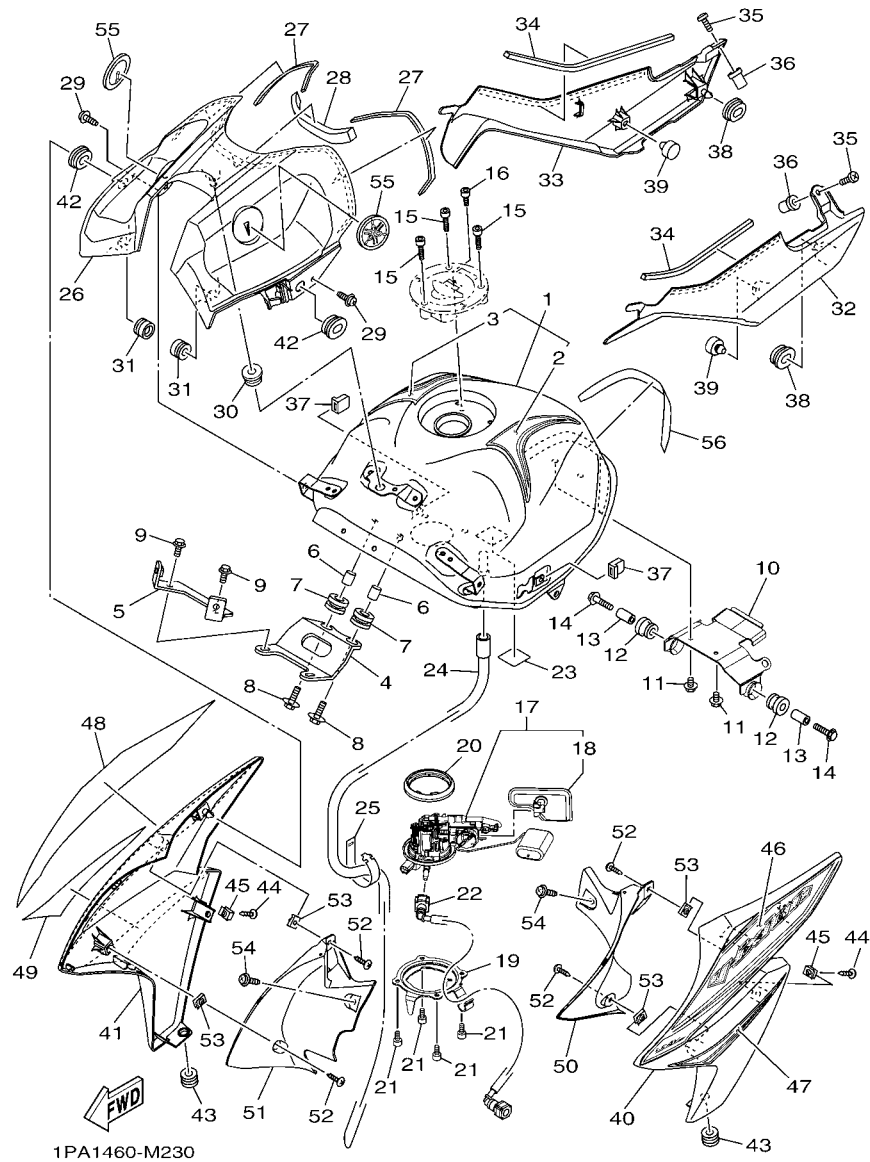


FIG. 23 FUEL TANK

REF. NO.	PART NO.	DESCRIPTION	1PA1				REMARKS
1	1PA-F4100-00-P0	FUEL TANK ASSY	1				UR FOR RM7
	1PA-F4100-10-P0	FUEL TANK ASSY	1				UR FOR SMX
	1PA-F4100-20-P0	FUEL TANK ASSY	1				UR FOR WM6
	1PA-F4100-30-P0	FUEL TANK ASSY	1				UR FOR LYNM9
2	1PA-F4254-00	.GRAPHIC, FUEL TANK 7	1				UR FOR RM7
	1PA-F4254-10	.GRAPHIC, FUEL TANK 7	1				UR FOR SMX
	1PA-F4254-20	.GRAPHIC, FUEL TANK 7	1				UR FOR WM6
	1PA-F4254-30	.GRAPHIC, FUEL TANK 7	1				UR FOR LYNM9
3	1PA-F4255-00	.GRAPHIC, FUEL TANK 8	1				UR FOR RM7
	1PA-F4255-10	.GRAPHIC, FUEL TANK 8	1				UR FOR SMX
	1PA-F4255-20	.GRAPHIC, FUEL TANK 8	1				UR FOR WM6
	1PA-F4255-30	.GRAPHIC, FUEL TANK 8	1				UR FOR LYNM9
4	1PA-F412Y-00	BRKT., TANK FITTING FR.	1				
5	1PA-F411F-00	PLATE, FITTING	1				
6	90387-06892	COLLAR	2				
7	90480-15483	GROMMET	2				
8	90119-06234	BOLT, WITH WASHER	2				
9	95812-06014	BOLT, FLANGE	2				
10	1PA-F413Y-00	BRACKET, TANK FITTING	1				
11	95822-06010	BOLT, FLANGE	2				
12	90480-18549	GROMMET	2				
13	90387-06890	COLLAR	2				
14	95812-06030	BOLT, FLANGE	2				
15	90110-05806	BOLT, HEXAGON SOCKET HEAD	3				
16	91312-05010	BOLT	1				
17	1PA-E3907-00	FUEL PUMP COMP.	1				
18	54P-E3915-00	.FILTER	1				

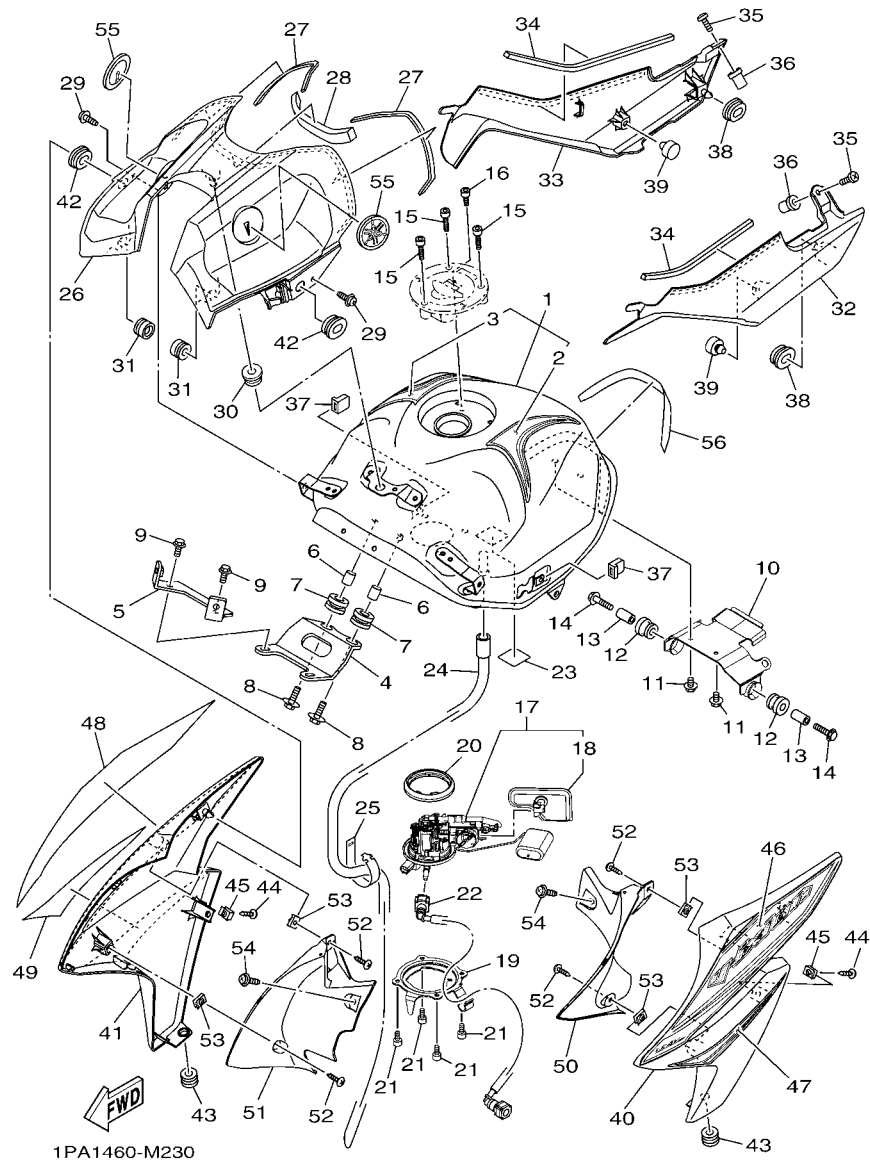


FIG. 23 FUEL TANK

REF. NO.	PART NO.	DESCRIPTION	1PA1				REMARKS
19	1PA-F4491-00	BRACKET, FUEL PUMP	1				
20	54P-F414G-00	SEAL	1				
21	91312-05010	BOLT	4				
22	1PA-E3971-00	PIPE, FUEL 1	1				
23	1PA-F4595-00	PROTECTOR	1				
24	1PA-F4312-00	PIPE 2	1				
25	1PA-F179E-00	BAND	1				
26	1PA-F171A-00-P0	COVER, TOP	1				SMX FOR RM7,LYNM9
	1PA-F171A-00-P1	COVER, TOP	1				DBNM8 FOR SMX
	1PA-F171A-00-P2	COVER, TOP	1				RM7 FOR WM6
27	90520-03819	DAMPER, PLATE	2				
28	90520-15802	DAMPER, PLATE	1				
29	90159-06860	SCREW, WITH WASHER	2				
30	90480-13867	GROMMET	1				
31	90480-12823	GROMMET	2				
32	1PA-F4129-00	COVER, SIDE 1	1				
33	1PA-F4139-00	COVER, SIDE 2	1				
34	90520-05014	DAMPER, PLATE	2				
35	98902-05016	SCREW, BIND	2				
36	90179-05849	NUT	2				
37	1PA-F411J-00	DAMPER, SIDE COVER	2				
38	90480-01558	GROMMET	2				
39	1PA-F1717-00	DAMPER	2				
40	1PA-F137W-00-P0	SCOOP, AIR 1	1				UR FOR RM7
	1PA-F137W-00-P1	SCOOP, AIR 1	1				UR FOR SMX
	1PA-F137W-00-P2	SCOOP, AIR 1	1				UR FOR WM6
	1PA-F137W-00-P3	SCOOP, AIR 1	1				UR FOR LYNM9

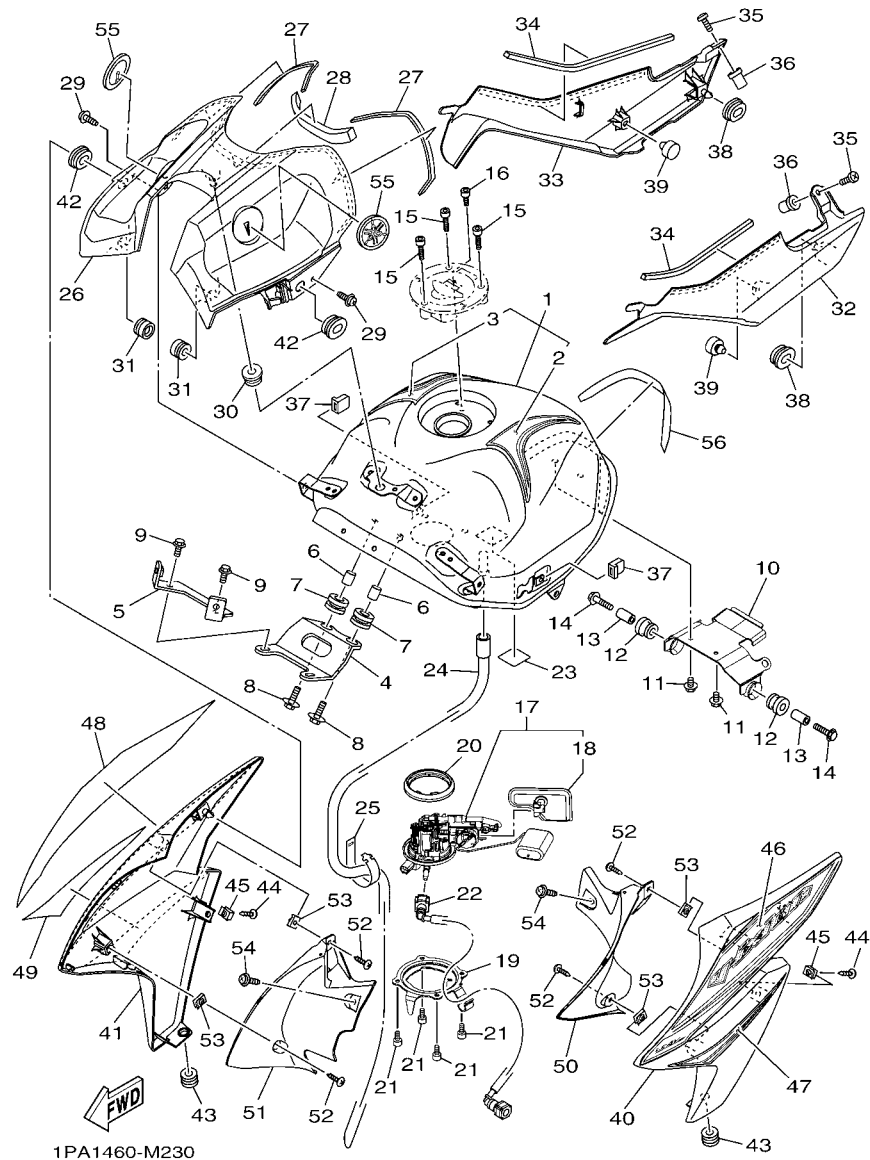


FIG. 23 FUEL TANK

REF. NO.	PART NO.	DESCRIPTION	1PA1				REMARKS
41	1PA-F137X-00-P0	SCOOP, AIR 2	1				UR FOR RM7
	1PA-F137X-00-P1	SCOOP, AIR 2	1				UR FOR SMX
	1PA-F137X-00-P2	SCOOP, AIR 2	1				UR FOR WM6
	1PA-F137X-00-P3	SCOOP, AIR 2	1				UR FOR LYNM9
42	90480-01558	GROMMET	2				
43	90480-10623	GROMMET	2				
44	90159-06860	SCREW, WITH WASHER	2				
45	90183-06818	NUT, SPRING	2				
46	1PA-F4244-00	GRAPHIC, FUEL TANK 1	1				UR FOR RM7
	1PA-F4244-10	GRAPHIC, FUEL TANK 1	1				UR FOR SMX
	1PA-F4244-20	GRAPHIC, FUEL TANK 1	1				UR FOR WM6
	1PA-F4244-30	GRAPHIC, FUEL TANK 1	1				UR FOR LYNM9
47	1PA-F4245-00	GRAPHIC, FUEL TANK 2	1				UR FOR RM7
	1PA-F4245-10	GRAPHIC, FUEL TANK 2	1				UR FOR SMX
	1PA-F4245-20	GRAPHIC, FUEL TANK 2	1				UR FOR WM6
	1PA-F4245-30	GRAPHIC, FUEL TANK 2	1				UR FOR LYNM9
48	1PA-F4246-00	GRAPHIC 3	1				UR FOR RM7
	1PA-F4246-10	GRAPHIC 3	1				UR FOR SMX
	1PA-F4246-20	GRAPHIC 3	1				UR FOR WM6
	1PA-F4246-30	GRAPHIC 3	1				UR FOR LYNM9
49	1PA-F4247-00	GRAPHIC	1				UR FOR RM7
	1PA-F4247-10	GRAPHIC	1				UR FOR SMX
	1PA-F4247-20	GRAPHIC	1				UR FOR WM6
	1PA-F4247-30	GRAPHIC	1				UR FOR LYNM9
50	1PA-F137U-00	GUIDE, AIR 1	1				
51	1PA-F137V-00	GUIDE, AIR 2	1				
52	97702-50012	SCREW, TAPPING	4				

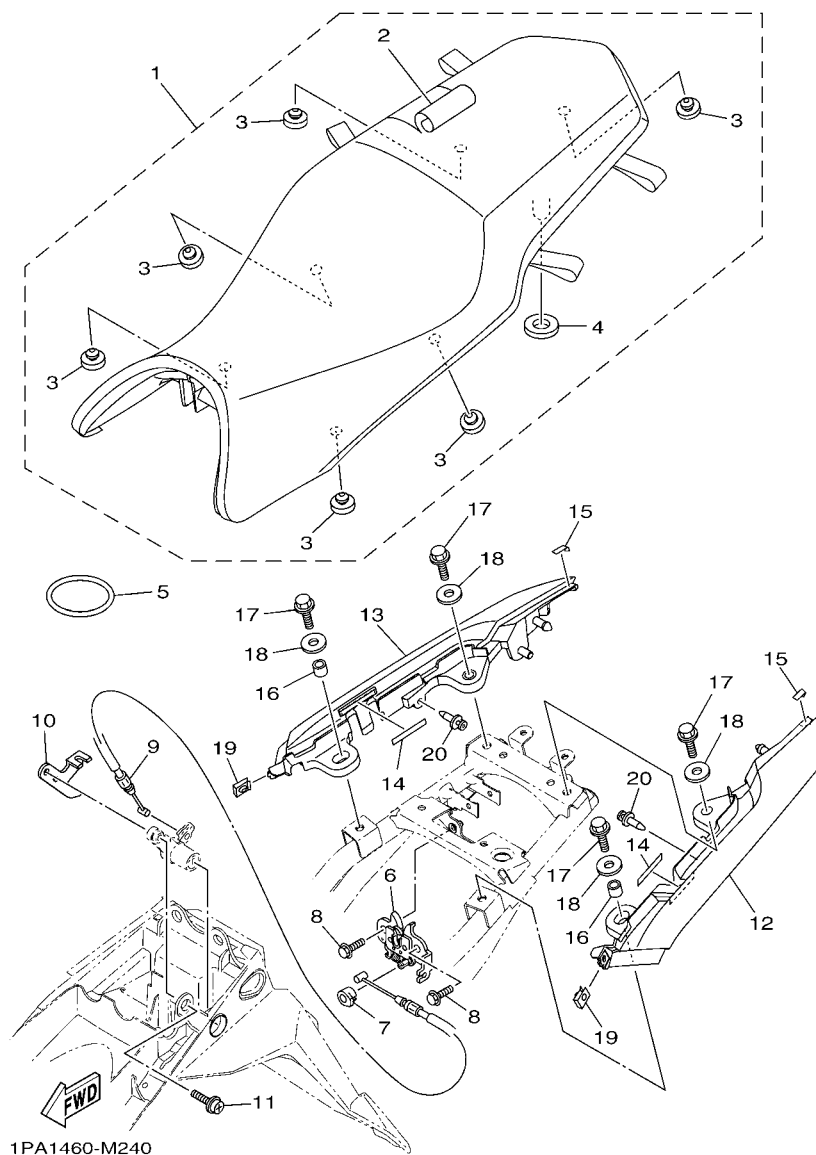


FIG. 24 SEAT

REF. NO.	PART NO.	DESCRIPTION	1PA1				REMARKS
1	1PA-F4730-00	DOUBLE SEAT ASSY	1				
2	1PA-F4731-00	.COVER, SEAT	1				
3	3C1-F4741-00	.PAD, SEAT	6				
4	45P-F4763-00	.PAD, SEAT 2	1				
5	5TL-H2131-00	BAND, BATTERY	1				
6	1S7-F4780-00	SEAT LOCK ASSY	1				
7	1S7-F4768-00	STOPPER	1				
8	95022-06010	BOLT, FLANGE	2				
9	1PA-F478E-00	CABLE, SEAT LOCK	1				
10	1PA-F117K-00	STAY, LOCK	1				
11	90159-06054	SCREW, WITH WASHER	1				
12	1PA-F470J-00-P0	ASSIST GRIP ASSY., 1	1				UR FOR RM7
	1PA-F470J-00-P1	ASSIST GRIP ASSY., 1	1				UR FOR SMX
	1PA-F470J-00-P2	ASSIST GRIP ASSY., 1	1				UR FOR WM6
	1PA-F470J-00-P3	ASSIST GRIP ASSY., 1	1				UR FOR LYNM9
13	1PA-F470K-00-P0	ASSIST GRIP ASSY., 2	1				UR FOR RM7
	1PA-F470K-00-P1	ASSIST GRIP ASSY., 2	1				UR FOR SMX
	1PA-F470K-00-P2	ASSIST GRIP ASSY., 2	1				UR FOR WM6
	1PA-F470K-00-P3	ASSIST GRIP ASSY., 2	1				UR FOR LYNM9
14	1PA-F476U-00	PROTECTOR,1	2				
15	1PA-F476V-00	PROTECTOR,2	2				
16	90387-08085	COLLAR	2				
17	95822-08025	BOLT, FLANGE	4				
18	90201-08871	WASHER, PLATE	4				
19	90183-05823	NUT, SPRING	2				
20	90269-06812	RIVET	2				

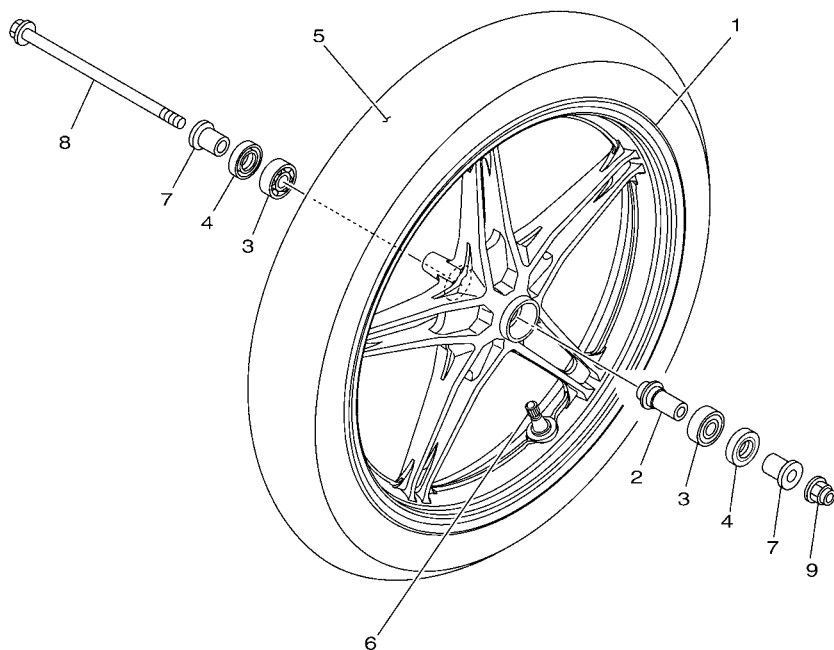


FIG. 25 FRONT WHEEL

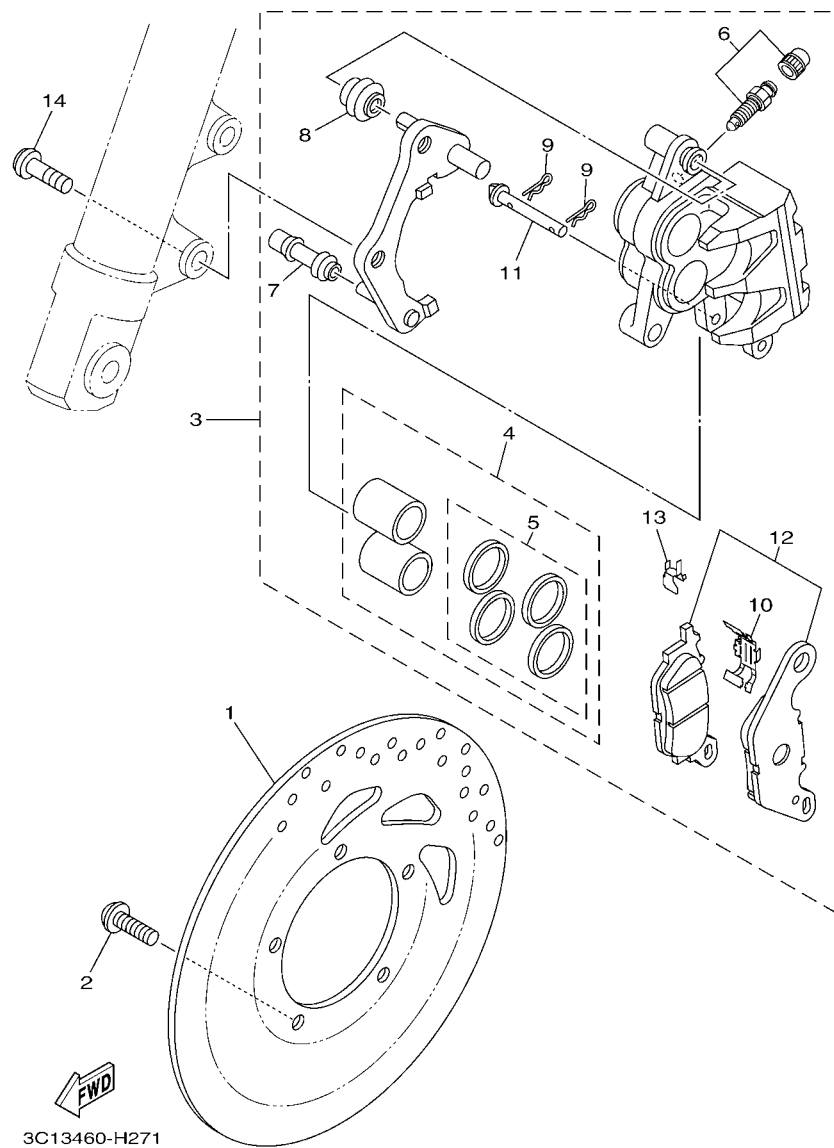


FIG. 26 FRONT BRAKE CALIPER

[illegible]

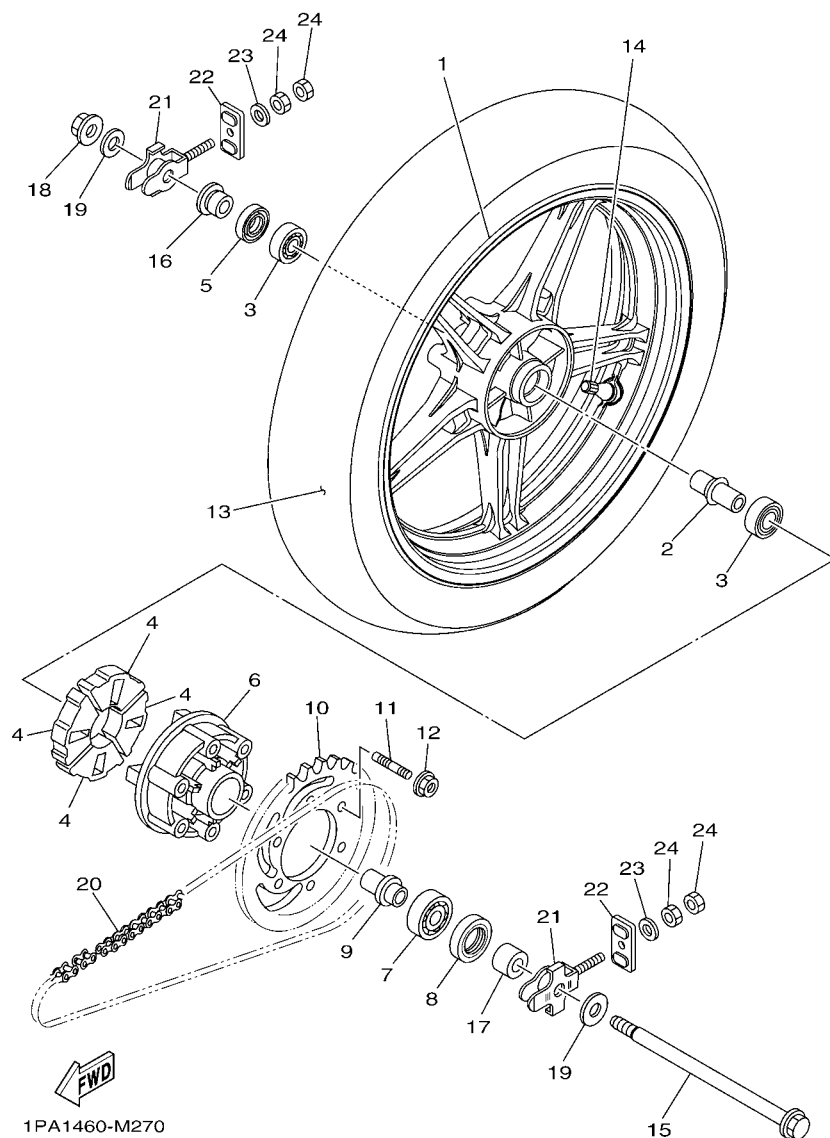


FIG. 27 REAR WHEEL

REF. NO.	PART NO.	DESCRIPTION	1PA1				REMARKS
1	1PA-F5338-00-0X	CAST WHEEL, REAR	1				YB/DRSC(RM7,SMX,WM6)
	1PA-F5338-00-1X	CAST WHEEL, REAR	1				YB/YS5(LYNM9)
	1PA-F5338-10-0X	CAST WHEEL, REAR	1				YB/DRSC(RM7,SMX,WM6)
	1PA-F5338-10-1X	CAST WHEEL, REAR	1				YB/YS5(LYNM9)
	1PA-F5338-20-0X	CAST WHEEL, REAR	1				YB/DRSC(RM7,SMX,WM6)
	1PA-F5338-20-1X	CAST WHEEL, REAR	1				YB/YS5(LYNM9)
2	1PA-F530S-00	COLLAR ASSY	1				
3	93306-252X7	BEARING	2				
4	45P-F5364-00	DAMPER	4				
5	93106-22808	OIL SEAL	1				
6	3C1-F5366-00-33	CLUTCH, HUB	1				YB
7	93306-004XV	BEARING	1				
8	93106-26815	OIL SEAL	1				
9	1PA-F5377-00	COLLAR, WHEEL	1				
10	1PA-F5443-00	SPROCKET, DRIVEN (43T)	1				
11	90116-08826	BOLT, STUD	6				
12	95602-08200	NUT, SELF-LOCKING	6				
13	94112-17804	TIRE (120/70-17 M/C 58P D102A)	1				UR DUNLOP
	94112-17805	TIRE (120/70-17 M/C 58P NF67)	1				UR INOUE
14	93900-00828	VALVE, RIM	1				
15	1PA-F5381-00	AXLE, WHEEL	1				
16	1PA-F5383-00	COLLAR, WHEEL	1				
17	1PA-F5386-00	COLLAR, SPROCKET AXLE	1				
18	95602-14200	NUT, SELF-LOCKING	1				
19	90201-15030	WASHER, PLATE	2				
20	94568-E0122	CHAIN (DID 428HDS-122LE)	1				
21	1PA-F5388-00	PULLER, CHAIN 1	2				

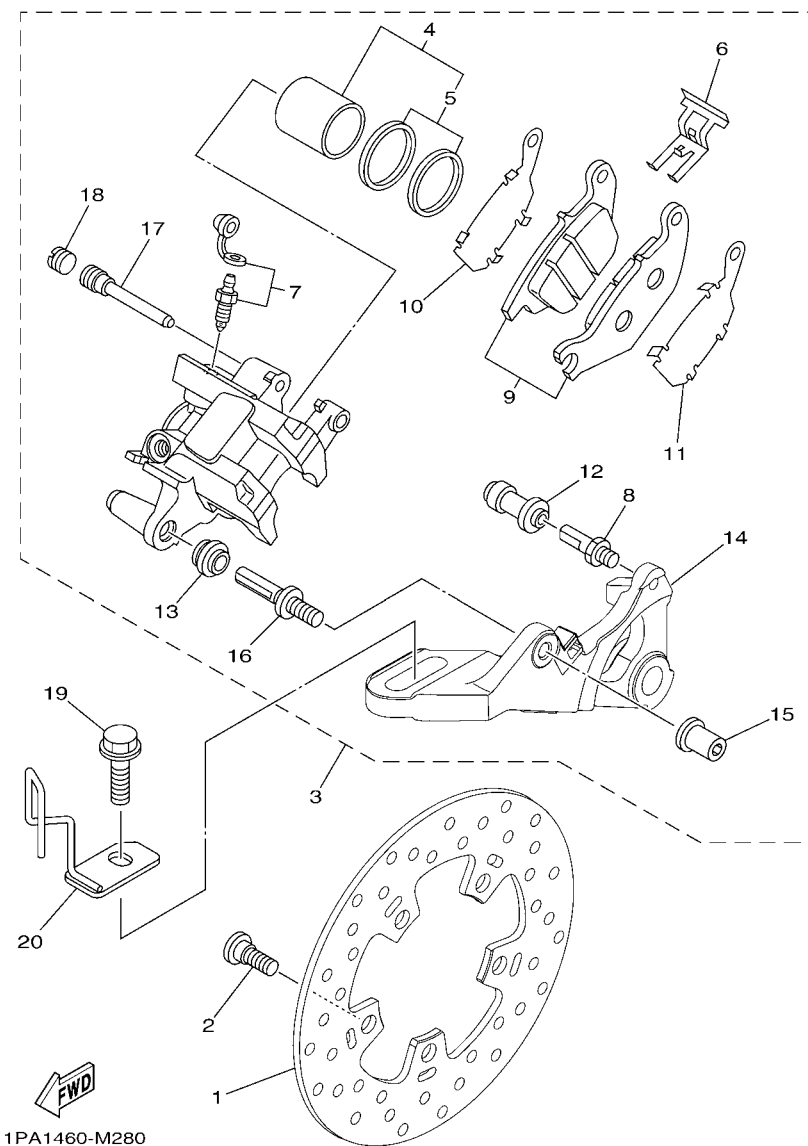


FIG. 28 REAR BRAKE CALIPER

REF. NO.	PART NO.	DESCRIPTION	IPA1				REMARKS
1	1PA-F582W-00	DISK, REAR BRAKE 2	1				
2	90109-08087	BOLT	5				
3	1PA-F580W-00	CALIPER ASSY, REAR 2	1				
4	50C-W0057-00	.PISTON ASSY, CALIPER	1				
5	3GD-W0047-00	.CALIPER SEAL KIT	1				
6	50C-F5919-00	.SUPPORT, PAD	1				
7	50C-W0048-00	.BLEED SCREW KIT	1				
8	50C-F5914-00	.PIN, SLIDE	1				
9	1PA-W0046-00	.BRAKE PAD KIT 2	1				
10	50C-F5827-00	.SHIM, CALIPER	1				
11	50C-F5828-00	.SHIM, CALIPER	1				
12	50C-F5937-00	.BOOT 2	1				
13	50C-F5917-00	.BOOT, CALIPER	1				
14	1PA-F5921-00	.BRACKET, SUPPORT	1				
15	50C-F5961-00	.NUT	1				
16	50C-2536G-00	.PIN	1				
17	50C-F5933-00	.PIN HANGER	1				
18	50C-F5916-00	.PLUG	1				
19	95812-10030	BOLT, FLANGE	1				
20	1PA-F587A-00	HOLDER, BRAKE HOSE	1				

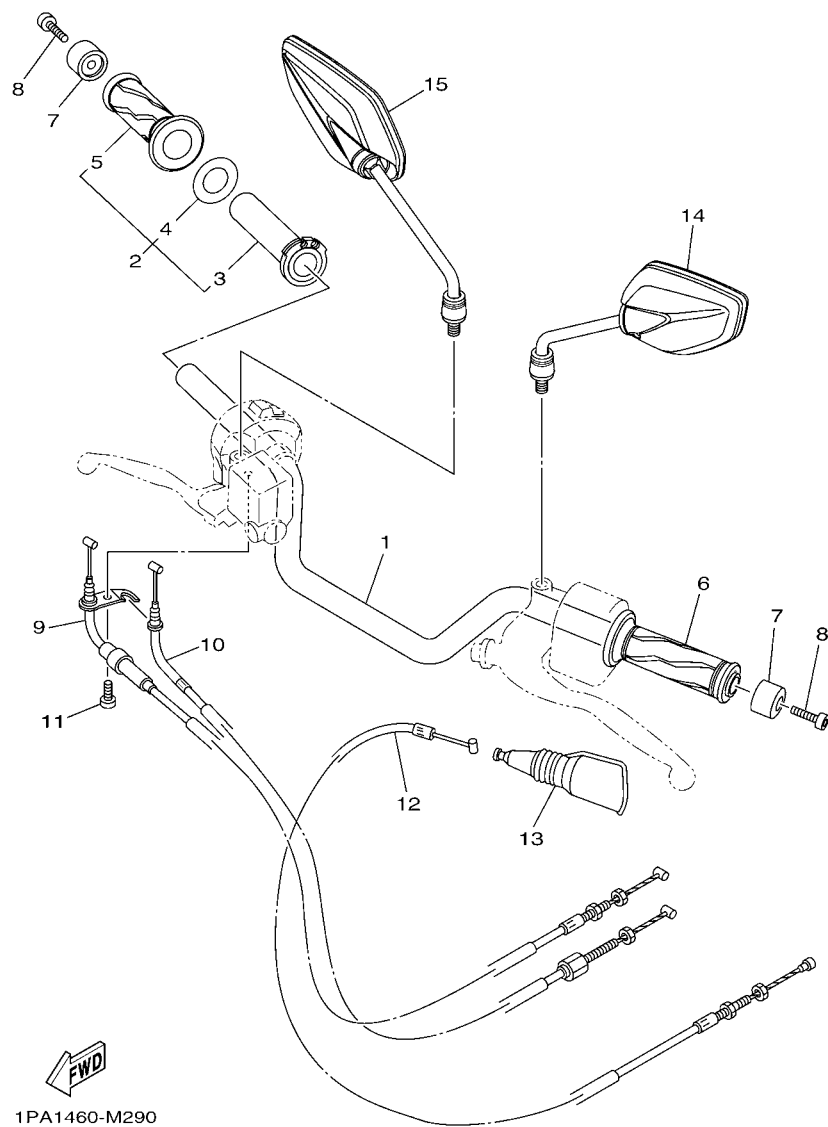


FIG. 29 STEERING HANDLE & CABLE

[illegible]

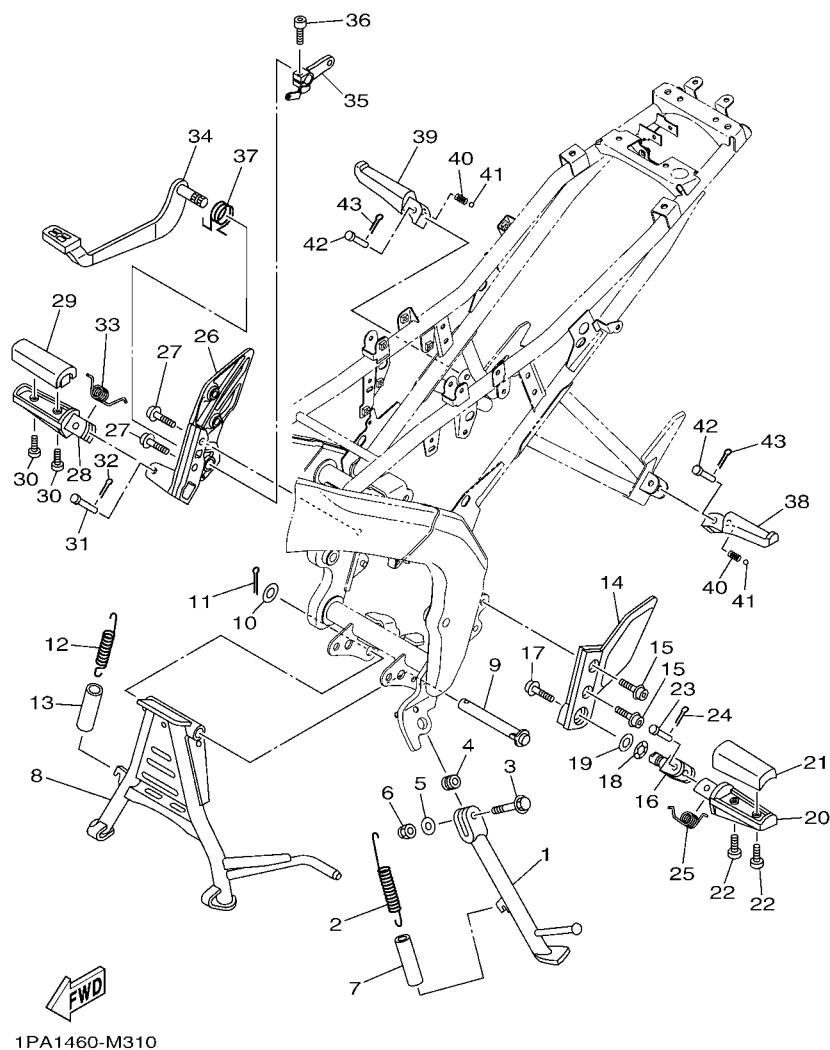


FIG. 31 STAND & FOOTREST

REF. NO.	PART NO.	DESCRIPTION	1PA1				REMARKS
1	3C1-F7311-00	STAND, SIDE	1				
2	90506-28800	SPRING, TENSION	1				
3	90105-10888	BOLT, FLANGE	1				
4	90387-10003	COLLAR	1				
5	92902-10600	WASHER, PLATE	1				
6	95612-10100	NUT, U	1				
7	90445-21848	HOSE (L70)	1				
8	3C1-F7111-00	STAND, MAIN	1				
9	1PA-F7112-00	SHAFT, MAIN STAND	1				
10	90201-16813	WASHER, PLATE	1				
11	91401-30030	PIN, COTTER	1				
12	90506-35812	SPRING, TENSION	1				
13	90445-21848	HOSE (L70)	1				
14	3C1-F7452-00	BRACKET, FOOTREST 1	1				
15	90110-08803	BOLT, HEXAGON SOCKET HEAD	2				
16	5BP-F7411-00	FOOTREST 1	1				
17	90110-10026	BOLT, HEXAGON SOCKET HEAD	1				
18	90206-17084	WASHER, WAVE	1				
19	90201-173U5	WASHER, PLATE	1				
20	5BP-F7451-00	FOOTREST	1				
21	3C1-F7413-00	COVER, FOOTREST	1				
22	98502-05014	SCREW, PAN HEAD	2				
23	90240-08144	PIN, CLEVIS	1				
24	91401-25015	PIN, COTTER	1				
25	90508-183B9	SPRING, TORSION	1				
26	1PA-F7462-00	BRACKET, FOOTREST 2	1				
27	90110-08803	BOLT, HEXAGON SOCKET HEAD	2				

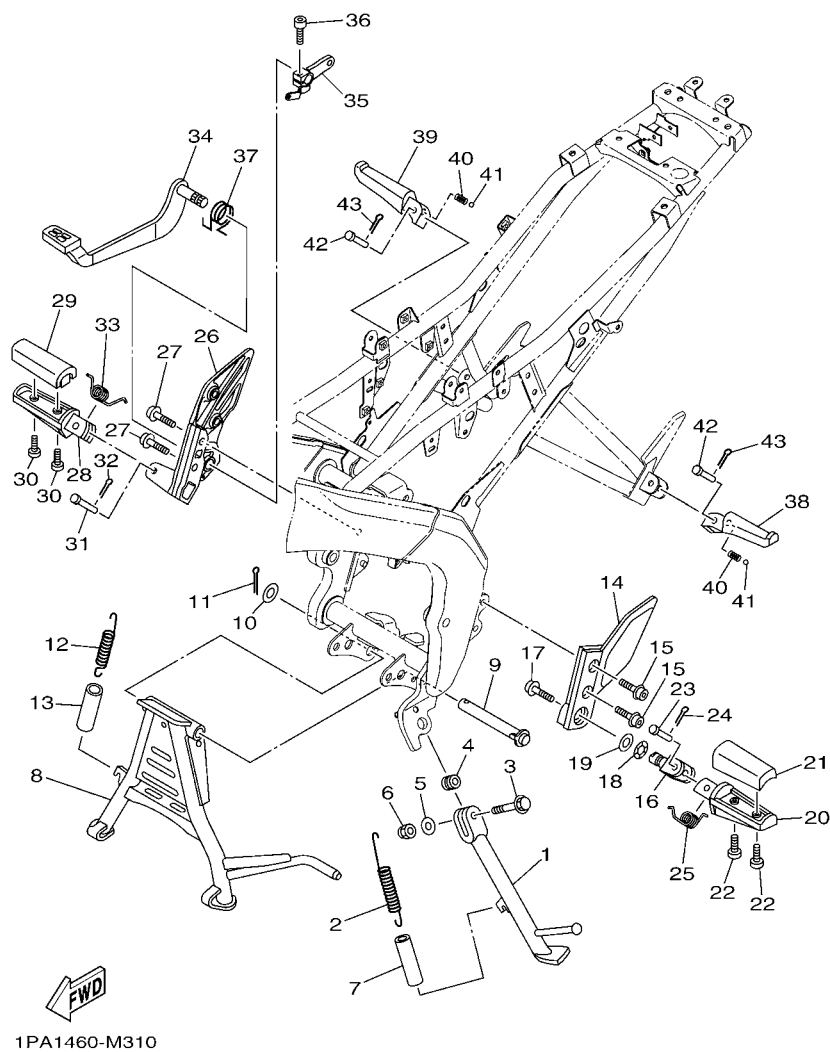


FIG. 31 STAND & FOOTREST

REF. NO.	PART NO.	DESCRIPTION	IPA 1				REMARKS
28	5BP-F7461-00	FOOTREST	1				
29	3C1-F7413-00	COVER, FOOTREST	1				
30	98502-05014	SCREW, PAN HEAD	2				
31	90240-08145	PIN, CLEVIS	1				
32	91401-25015	PIN, COTTER	1				
33	90508-183B9	SPRING, TORSION	1				
34	1PA-F7211-00	PEDAL, BRAKE	1				
35	1PA-F7262-00	LEVER	1				
36	91312-06020	BOLT	1				
37	3C1-F7216-00	SPRING, RETURN	1				
38	3C1-F7431-00	FOOTREST, REAR 1	1				
39	3C1-F7441-00	FOOTREST, REAR 2	1				
40	90501-12743	SPRING, COMPRESSION	2				
41	93501-04830	BALL	2				
42	90240-08144	PIN, CLEVIS	2				
43	91401-25015	PIN, COTTER	2				

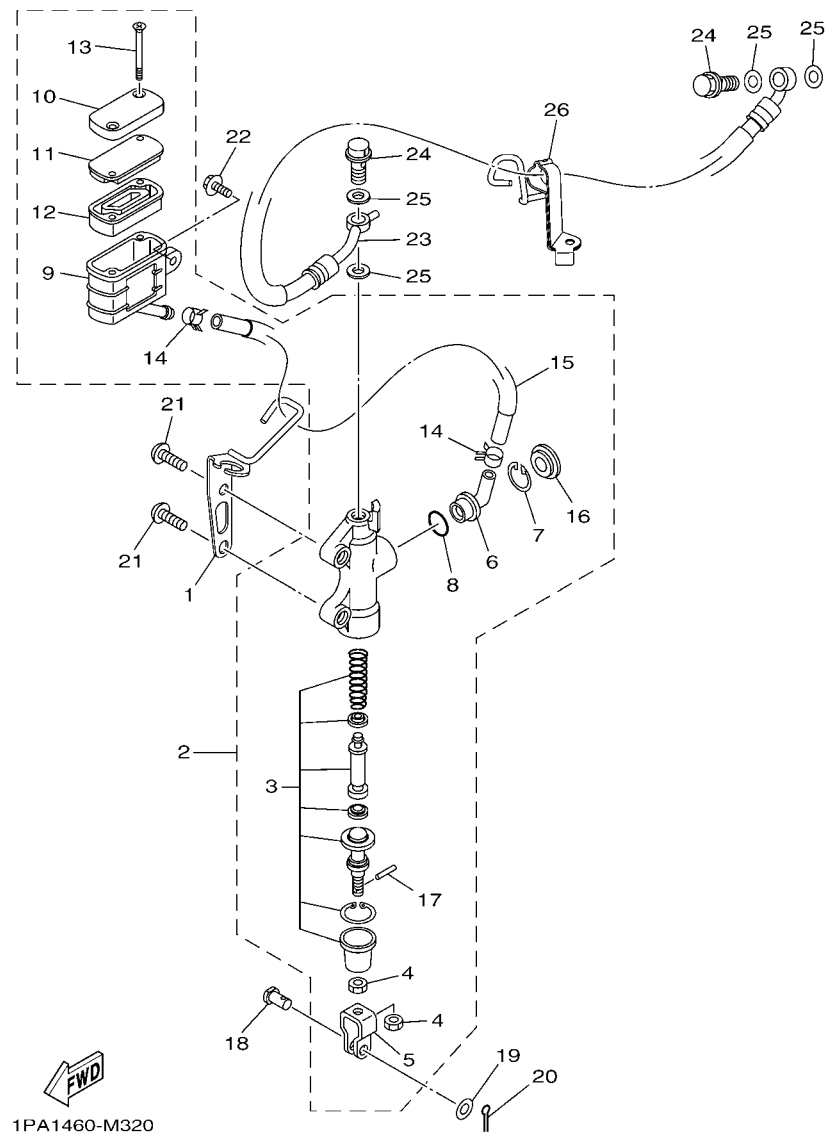


FIG. 32 REAR MASTER CYLINDER

REF. NO.	PART NO.	DESCRIPTION	1PA1				REMARKS
1	1PA-F144G-00	STAY, STOP SWITCH	1				
2	1PA-F583V-00	RR. MASTER CYLINDER ASSY.	1				
3	1PA-W0042-00	.CYLINDER KIT, MASTER	1				
4	95301-08700	.NUT	2				
5	50C-F7222-00	.JOINT	1				
6	50C-F582A-00	.JOINT	1				
7	50C-F5866-00	.CIRCLIP	1				
8	93210-15620	.O-RING	1				
9	1PA-F5894-00	.TANK, RESERVOIR	1				
10	1PA-F5852-00	.CAP, RESERVOIR	1				
11	1PA-F585B-00	.PLATE, DIAPHRAGM	1				
12	20P-F5854-00	.DIAPHRAGM, RESERVOIR	1				
13	98707-04045	.SCREW, FLAT HEAD	2				
14	90467-12085	.CLIP	2				
15	1CK-F5895-00	.HOSE, RESERVOIR	1				
16	50C-F589A-00	.COVER, DUST	1				
17	5BU-27234-00	.PIN, BRAKE ROD	1				
18	90240-08005	PIN, CLEVIS	1				
19	90201-08066	WASHER, PLATE	1				
20	91401-20012	PIN, COTTER	1				
21	92012-08025	BOLT, BUTTON HEAD	2				
22	90119-06137	BOLT, WITH WASHER	1				
23	1PA-F5873-00	HOSE, BRAKE 2	1				
24	90401-10812	BOLT, UNION	2				
25	90201-10118	WASHER, PLATE	4				
26	1PA-F5887-00	HOLDER, BRAKE HOSE	1				

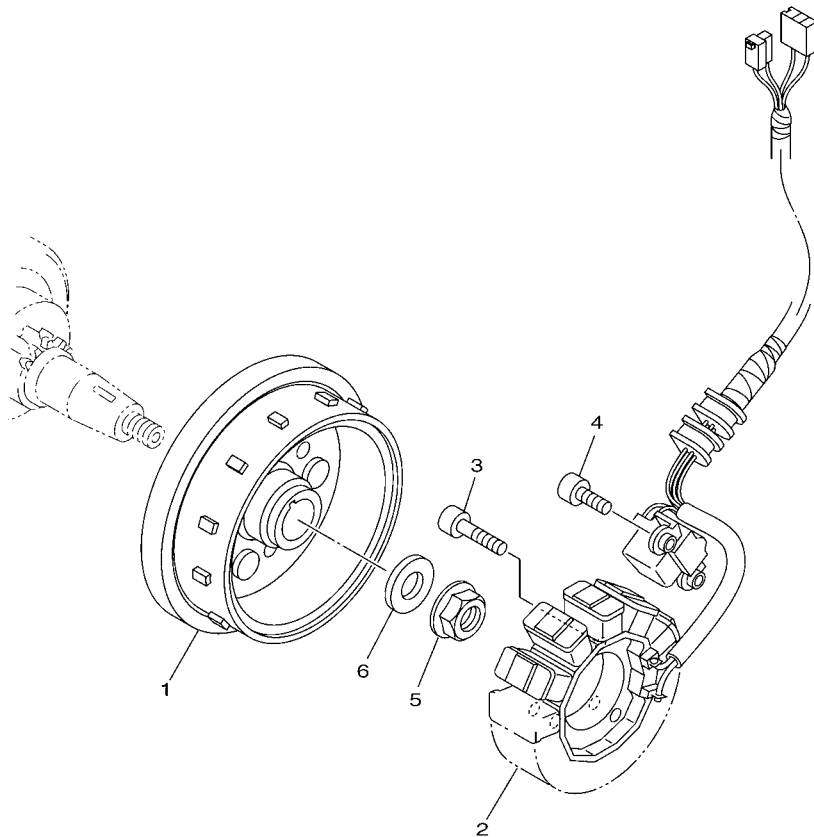


FIG. 33 GENERATOR

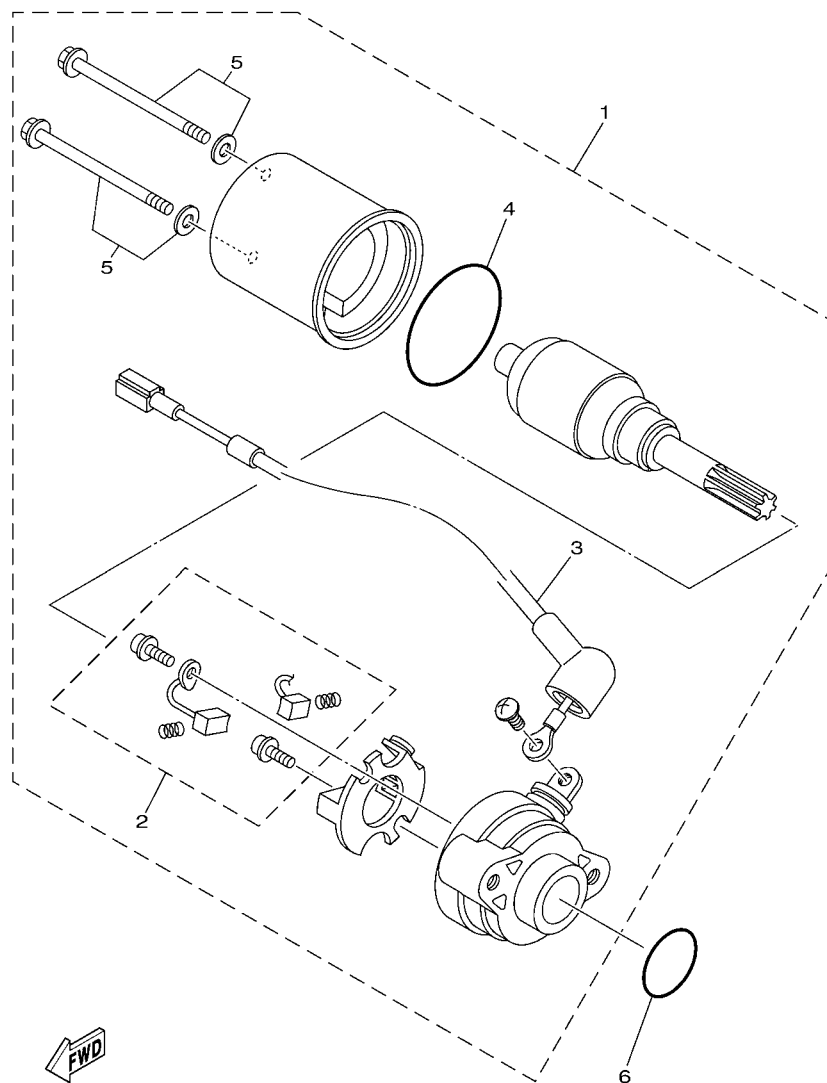
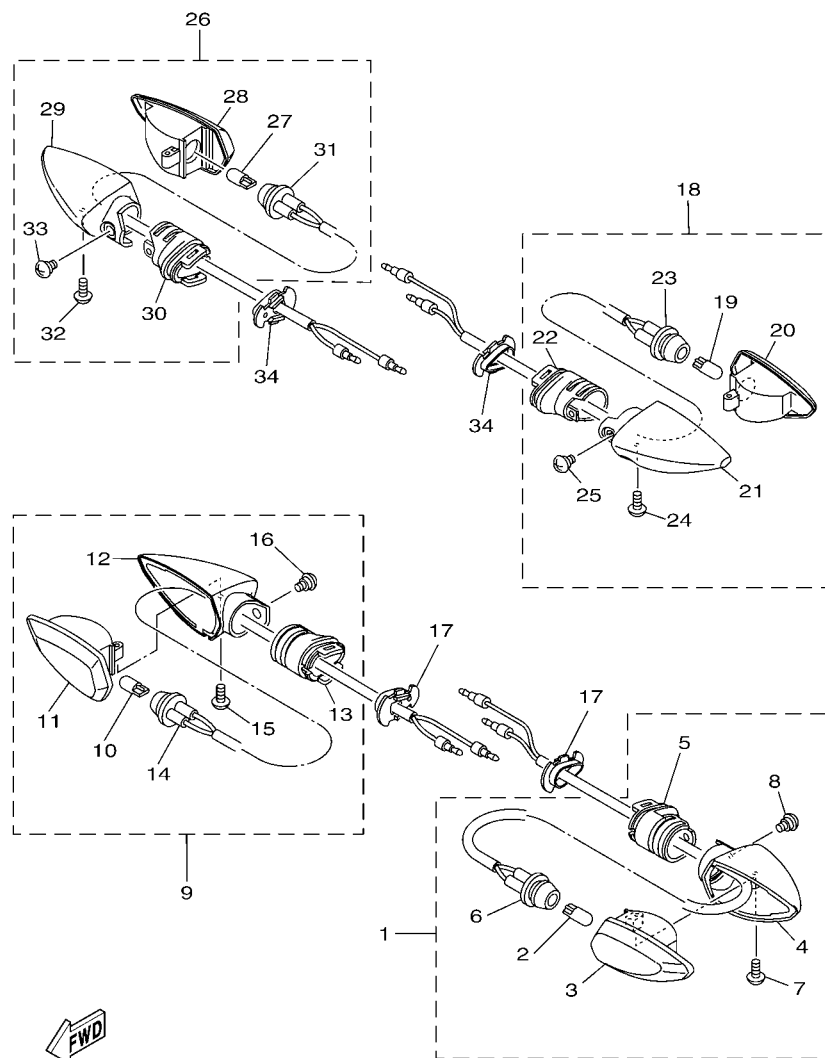


FIG. 34 STARTING MOTOR

[illegible]



1PA1460-M350

FIG. 35 FLASHER LIGHT

REF. NO.	PART NO.	DESCRIPTION	1PA1				REMARKS
1	1PA-H3310-00	FRONT FLASHER LIGHT ASSY 1	1				
2	5HV-H3311-00	.BULB (12V-10W) AMBER	1				
3	1PA-H333A-00	.LENS COMP 1	1				
4	1PA-H3323-00	.BODY	1				
5	1PA-H3328-00	.STAY, FLASHER 2	1				
6	1PA-H331E-00	.CORD ASSY	1				
7	1PA-H3333-00	.SCREW, LENS FITTING	1				
8	1PA-H3358-00	.SCREW, SPECIAL	1				
9	1PA-H3320-00	FRONT FLASHER LIGHT ASSY 2	1				
10	5HV-H3311-00	.BULB (12V-10W) AMBER	1				
11	1PA-H334A-00	.LENS COMP 2	1				
12	1PA-H332M-00	.BODY 2	1				
13	1PA-H3328-00	.STAY, FLASHER 2	1				
14	1PA-H332E-00	.CORD ASSY	1				
15	1PA-H3333-00	.SCREW, LENS FITTING	1				
16	1PA-H3358-00	.SCREW, SPECIAL	1				
17	3C1-H3318-00	STAY, FLASHER 1	2				
18	1PA-H3330-00	REAR FLASHER LIGHT ASSY 1	1				
19	5HV-H3311-00	.BULB (12V-10W) AMBER	1				
20	1PA-H334A-00	.LENS COMP 2	1				
21	1PA-H332M-00	.BODY 2	1				
22	1PA-H3328-00	.STAY, FLASHER 2	1				
23	1PA-H333E-00	.CORD ASSY	1				
24	1PA-H3333-00	.SCREW, LENS FITTING	1				
25	1PA-H3358-00	.SCREW, SPECIAL	1				
26	1PA-H3340-00	REAR FLASHER LIGHT ASSY 2	1				
27	5HV-H3311-00	.BULB (12V-10W) AMBER	1				

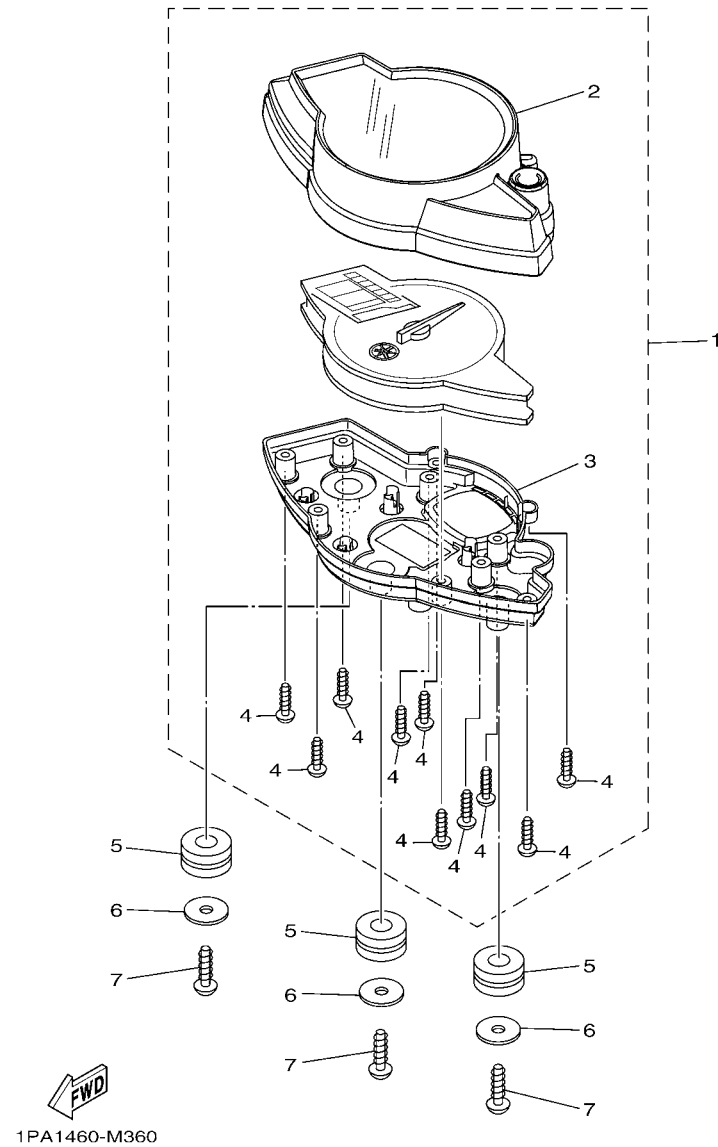


FIG. 36 METER

[illegible]

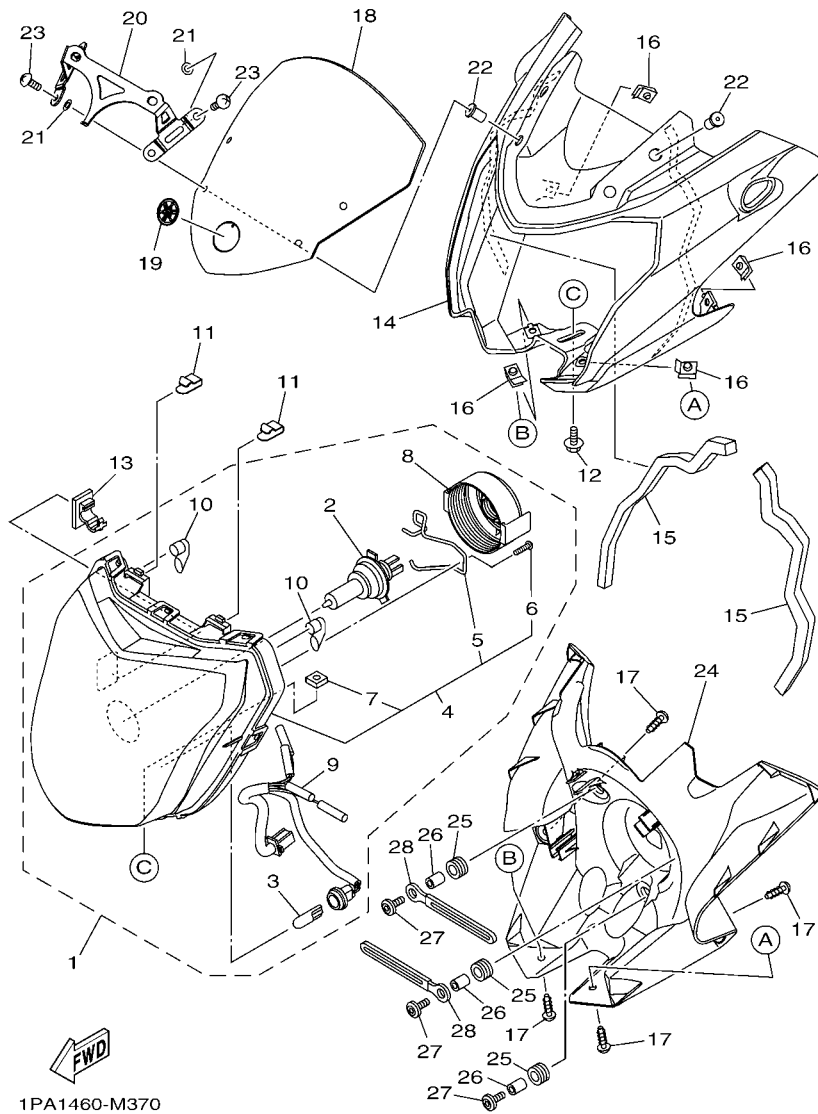
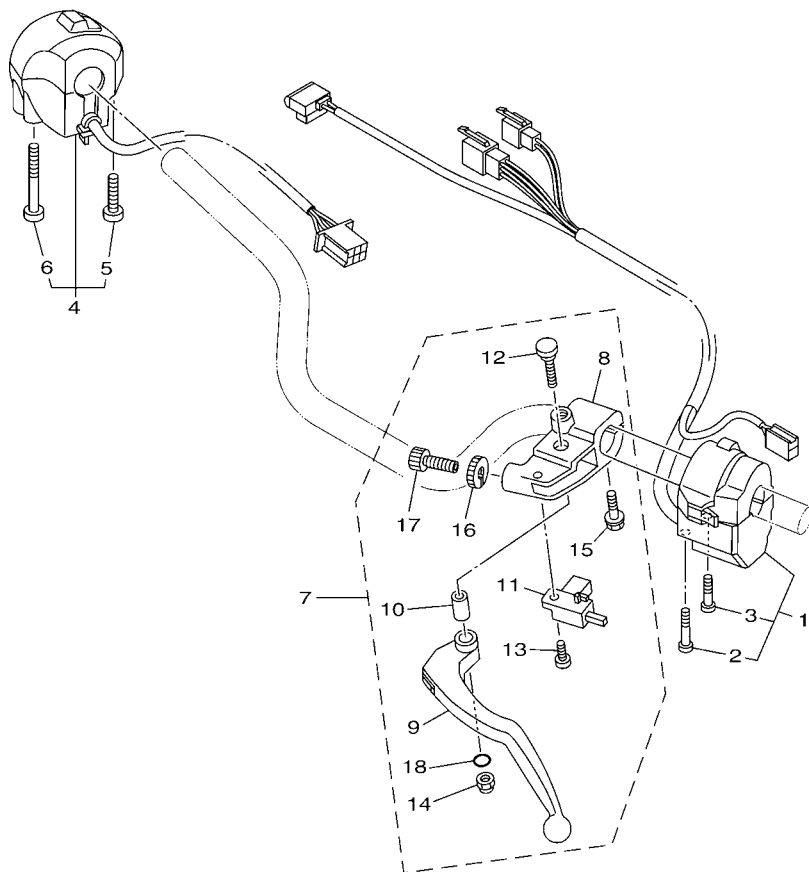


FIG. 37 HEADLIGHT

REF. NO.	PART NO.	DESCRIPTION	1PA1				REMARKS
1	1PA-H4300-00	HEADLIGHT ASSY	1				
2	1PA-H4314-00	.BULB, HEADLIGHT (12V-35/35W)	1				
3	2S0-H3516-00	.BULB (12V-3.4W)	1				
4	1PA-H430A-00	.HEADLIGHT UNIT ASSY	1				
5	54D-H4335-00	..SPRING	1				
6	1PA-H4365-00	..SCREW	1				
7	4NR-H4317-00	..NUT	1				
8	54D-H4397-00	.COVER, SOCKET	1				
9	1PA-H4312-00	.CORD ASSY	1				
10	2B5-H411V-00	.CAP	2				
11	3S0-H4374-00	CLIP	2				
12	95802-06012	BOLT, FLANGE	1				
13	90464-25160	CLAMP	1				
14	1PA-F8351-00-P0	BODY, COWLING	1				SMX FOR RM7,LYNM9
	1PA-F8351-00-P1	BODY, COWLING	1				DBNM8 FOR SMX
	1PA-F8351-00-P2	BODY, COWLING	1				RM7 FOR WM6
15	90520-15808	DAMPER, PLATE	2				
16	90183-050A7	NUT, SPRING	4				
17	90154-05043	SCREW, BINDING	4				
18	1PA-F8381-00	WINDSHIELD	1				
19	1PA-F836B-00	TUNING FORK MARK	1				
20	1PA-F3487-00	STAY, PLATE	1				
21	90202-04802	WASHER, PLATE	4				
22	90179-05849	NUT	4				
23	98907-05020	SCREW, BIND	4				
24	1PA-H4130-00	BODY ASSY, HEADLIGHT	1				
25	90480-14101	GROMMET	3				




1PA1460-M390

FIG. 39 HANDLE SWITCH & LEVER

REF. NO.	PART NO.	DESCRIPTION	1PA1				REMARKS
1	1PA-H3972-00	SWITCH, HANDLE 4	1				
2	9850N-05040	.SCREW, PAN HEAD	1				
3	9850N-05030	.SCREW, PAN HEAD	1				
4	1PA-H3975-00	SWITCH, HANDLE 2	1				
5	45P-H2133-00	.SCREW, FITTING	1				
6	1PA-H395W-00	.SCREW, SWITCH FITTING	1				
7	5BP-H2910-10	LEVER HOLDER ASSY (LEFT)	1				
8	3KA-H2911-00	HOLDER, LEVER 1	1				
9	3KA-H3912-00	.LEVER 1	1				
10	3KA-H3913-00	.COLLAR, LEVER 1	1				
11	5BP-H2917-00	.SWITCH	1				
12	3KA-H3945-00	.BOLT, LEVER	1				
13	98702-03008	.SCREW, FLAT HEAD	1				
14	95602-06100	.NUT, U	1				
15	97507-06525	.BOLT, WITH WASHER	1				
16	90179-08148	.NUT	1				
17	90123-08046	.BOLT	1				
18	93210-108H5	.O-RING	1				

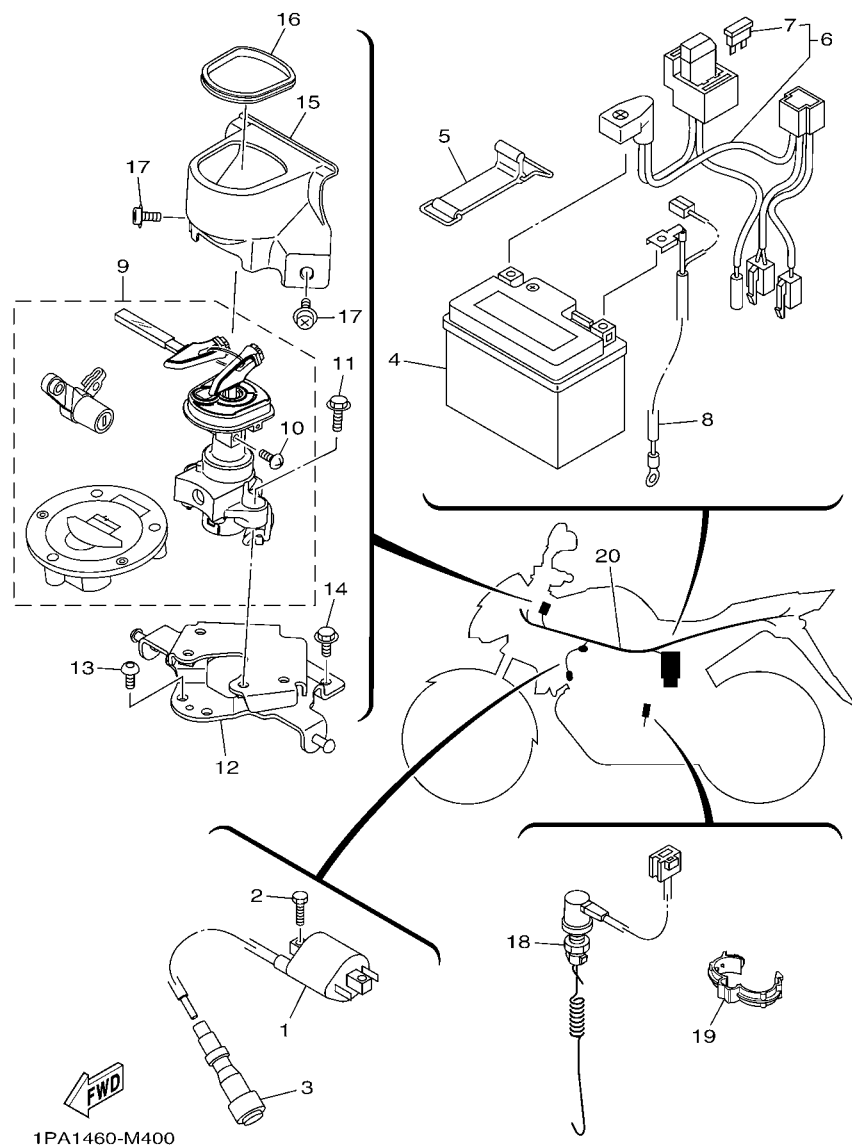


FIG. 40 ELECTRICAL 1

REF. NO.	PART NO.	DESCRIPTION	IPA1				REMARKS
1	3C1-H2310-01	IGNITION COIL ASSY	1				
2	97002-06016	BOLT	2				
3	1S7-H2370-00	PLUG CAP ASSY	1				
4	14D-H2100-00	BATTERY ASSY (YUASA YTZ4V)	1				UR
	14D-H2100-10	BATTERY ASSY (GS GZ4V)	1				UR
5	3C1-H2131-00	BAND, BATTERY	1				
6	1PA-H2150-00	FUSE HOLDER ASSY	1				
7	54P-H2151-00	.FUSE (15A)	2				
8	1PA-H2116-00	WIRE, MINUS LEAD	1				
9	1PA-XH250-00	MAIN SW. STRG. LOCK SUB ASSY	1				
10	97602-05208	.SCREW, PAN HEAD WITH WASHER	1				
11	95812-06020	BOLT, FLANGE	2				
12	1PA-H252C-00	STAY, MAIN SWITCH	1				
13	90149-06156	SCREW	2				
14	95802-06012	BOLT, FLANGE	2				
15	1PA-H2568-00	COVER, MAIN SWITCH	1				
16	1PA-H2545-00	GROMMET	1				
17	90159-06860	SCREW, WITH WASHER	2				
18	1PA-H2530-00	STOP SWITCH ASSY	1				
19	90464-14803	CLAMP	1				
20	1PA-H2590-00	WIRE HARNESS ASSY	1				

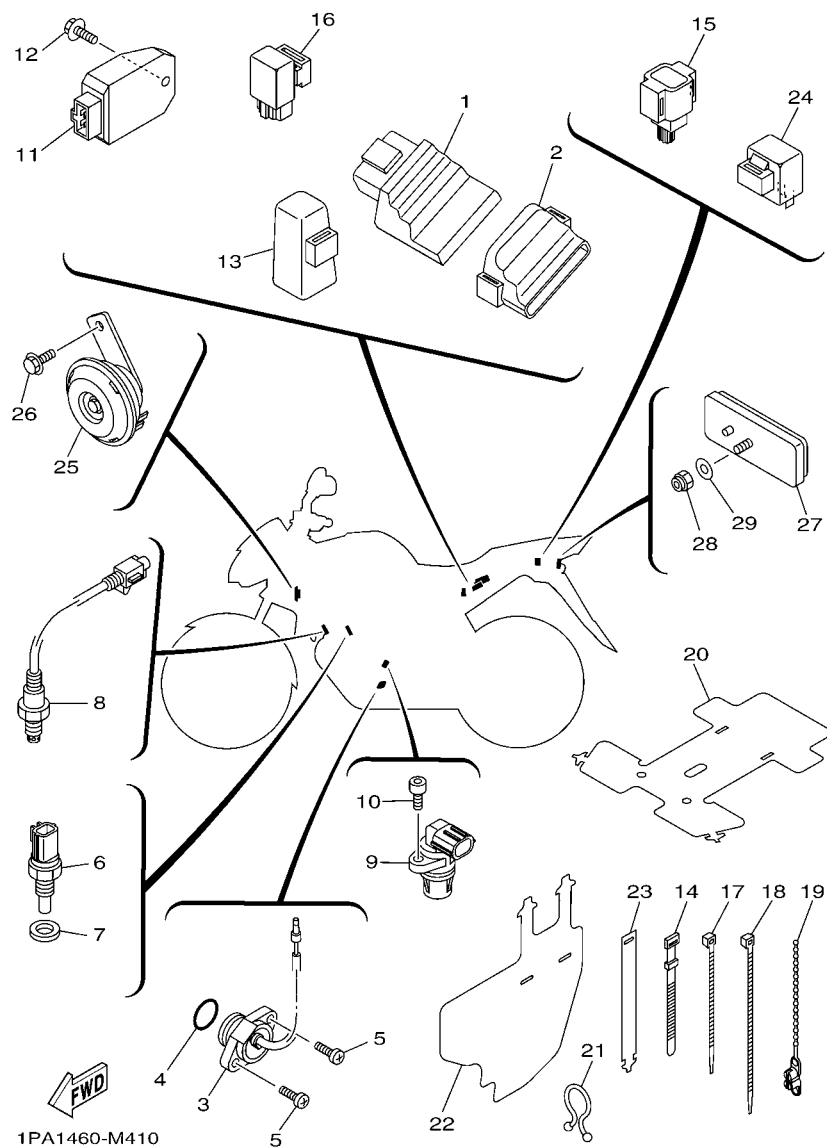
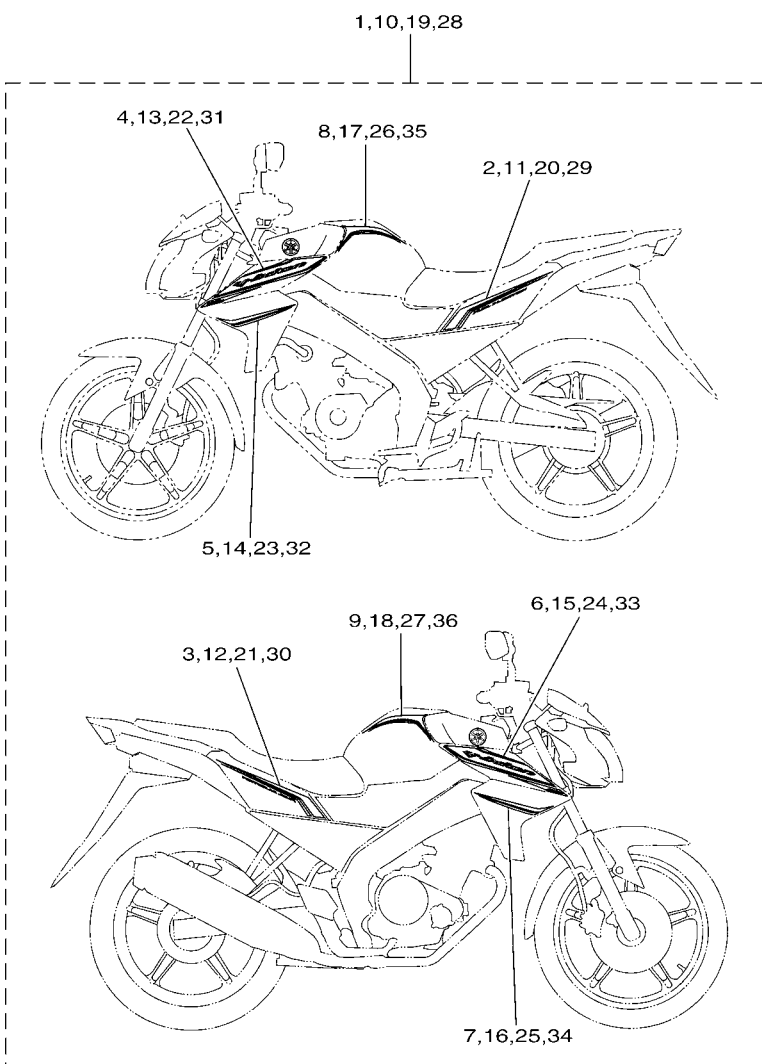


FIG. 41 ELECTRICAL 2

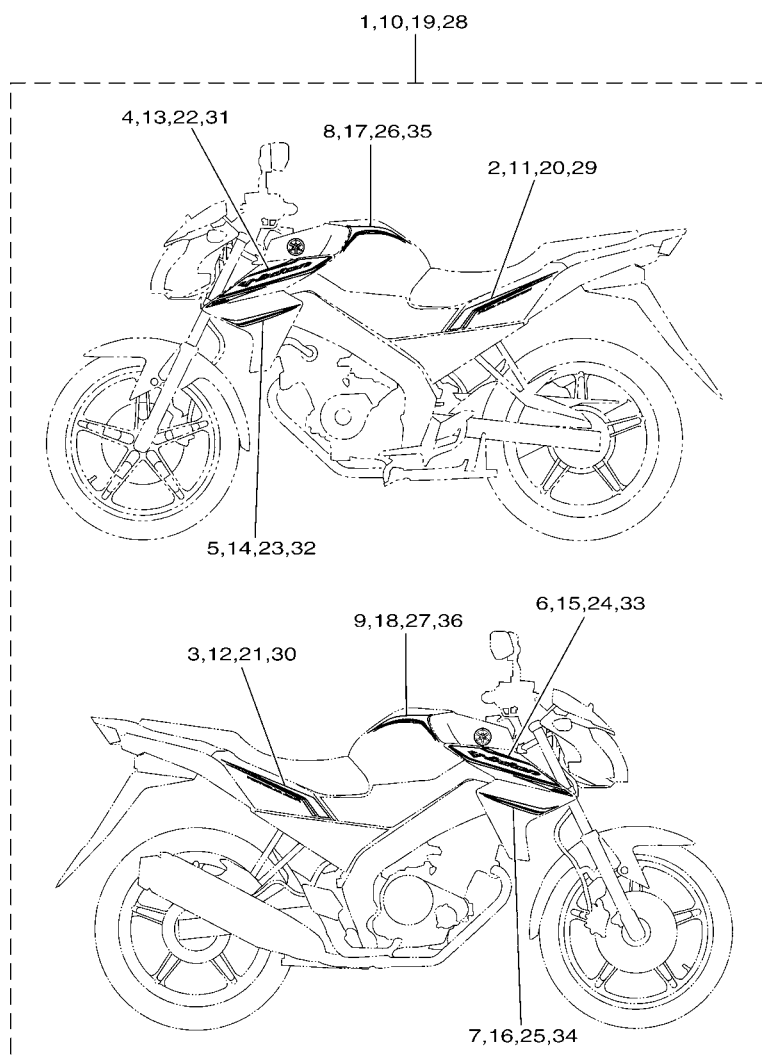
REF. NO.	PART NO.	DESCRIPTION	1PA1				REMARKS
1	1PA-H591A-00	ENGINE CONTROL UNIT ASSY	1				
2	1PA-H5546-00	BAND	1				
3	1PA-H2540-00	NEUTRAL SWITCH ASSY	1				
4	93210-21801	O-RING	1				
5	98502-05016	SCREW, PAN HEAD	2				
6	54P-H3591-00	THERMO UNIT	1				
7	90430-10802	GASKET	1				
8	1DY-H592A-00	SENSOR, OXYGEN	1				
9	1PA-H3755-00	SENSOR, SPEED	1				
10	91312-06014	BOLT	1				
11	1PA-H1960-00	RECTIFIER & REGULATOR ASSY	1				
12	95022-06016	BOLT, FLANGE	1				
13	5TP-H1940-00	STARTER RELAY ASSY	1				
14	3RS-H3936-00	BAND, SWITCH CORD	2				
15	1PA-H2576-00	SENSOR, LEAN ANGLE	1				
16	3C1-H1950-00	RELAY ASSY	1				
17	90464-36800	CLAMP	5				
18	90464-50800	CLAMP	1				
19	90464-20031	CLAMP	1				
20	3C1-H2599-00	COVER, CONNECTER	1				
21	90464-20822	CLAMP	1				
22	1PA-H2589-00	PROTECTOR, WIRE HARNESS	1				
23	1PA-F179E-00	BAND	1				
24	1PA-H3350-00	FLASHER RELAY ASSY	1				
25	1PA-H3371-00	HORN	1				
26	95802-06012	BOLT, FLANGE	1				
27	3C1-H5130-00	REAR REFLECTOR ASSY	1				



1PA1460-M420

FIG. 42 OPTIONAL PARTS 1

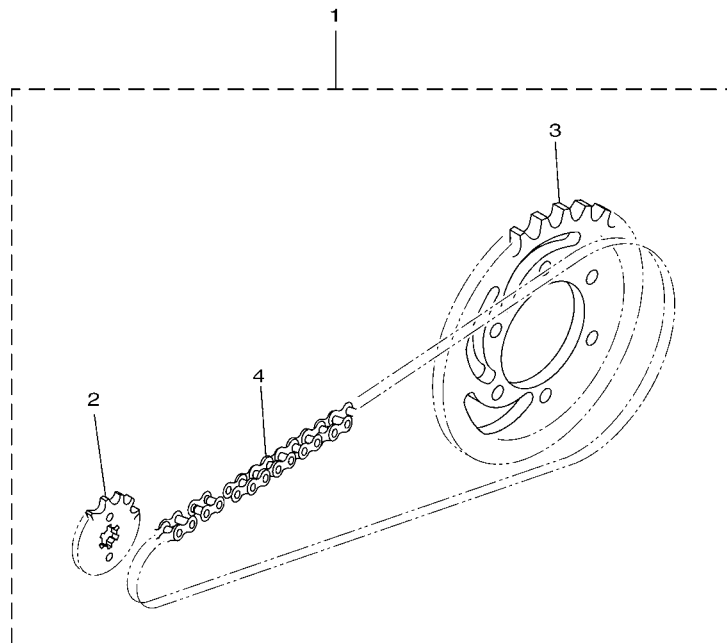
REF. NO.	PART NO.	DESCRIPTION	1PA1				REMARKS
1	1PA-WF070-00	(KIT) GRAPHIC SET	1				FOR RM7
2	1PA-F17F1-00	.GRAPHIC, 1	1				
3	1PA-F17F2-00	.GRAPHIC, 2	1				
4	1PA-F4244-00	.GRAPHIC, FUEL TANK 1	1				
5	1PA-F4245-00	.GRAPHIC, FUEL TANK 2	1				
6	1PA-F4246-00	.GRAPHIC 3	1				
7	1PA-F4247-00	.GRAPHIC	1				
8	1PA-F4254-00	.GRAPHIC, FUEL TANK 7	1				
9	1PA-F4255-00	.GRAPHIC, FUEL TANK 8	1				
10	1PA-WF070-10	(KIT) GRAPHIC SET	1				FOR SMX
11	1PA-F17F1-10	.GRAPHIC, 1	1				
12	1PA-F17F2-10	.GRAPHIC, 2	1				
13	1PA-F4244-10	.GRAPHIC, FUEL TANK 1	1				
14	1PA-F4245-10	.GRAPHIC, FUEL TANK 2	1				
15	1PA-F4246-10	.GRAPHIC 3	1				
16	1PA-F4247-10	.GRAPHIC	1				
17	1PA-F4254-10	.GRAPHIC, FUEL TANK 7	1				
18	1PA-F4255-10	.GRAPHIC, FUEL TANK 8	1				
19	1PA-WF070-20	(KIT) GRAPHIC SET	1				FOR WM6
20	1PA-F17F1-20	.GRAPHIC, 1	1				
21	1PA-F17F2-20	.GRAPHIC, 2	1				
22	1PA-F4244-20	.GRAPHIC, FUEL TANK 1	1				
23	1PA-F4245-20	.GRAPHIC, FUEL TANK 2	1				
24	1PA-F4246-20	.GRAPHIC 3	1				
25	1PA-F4247-20	.GRAPHIC	1				
26	1PA-F4254-20	.GRAPHIC, FUEL TANK 7	1				
27	1PA-F4255-20	.GRAPHIC, FUEL TANK 8	1				



1PA1460-M420

FIG. 42 **OPTIONAL PARTS 1**

[illegible]



1PA1460-M430

FIG. 43 **OPTIONAL PARTS 2**

[illegible]

NUMERICAL INDEX

PART NO.	REF. NO.	PART NO.	REF. NO.	PART NO.	REF. NO.	PART NO.	REF. NO.	PART NO.	REF. NO.	PART NO.	REF. NO.
3C1-11531-00	2 - 22	1PA-E2159-00	3 - 9	1PA-E4450-00	8 - 18	3C1-E7221-00	14 - 20	1PA-F171A-00-P1	23 - 26	1PA-F3110-00	22 - 6
3C1-11536-00	2 - 15		3 - 12	1PA-E4452-00	8 - 19	3C1-E7231-00	14 - 18	1PA-F171A-00-P2	23 - 26		22 - 22
3C1-11681-10	2 - 3	1S7-E2161-00	3 - 11	3C1-E4485-00	8 - 23	3C1-E7241-00	14 - 17	1PA-F171E-00-P0	19 - 22	5BP-F3111-10	22 - 12
5YP-12411-00	6 - 1	3C1-E2170-00	4 - 1	1S7-E4613-00	9 - 6	1PA-E7251-00	14 - 14	1PA-F171E-00-P1	19 - 22		22 - 28
3C1-16193-00	13 - 2	5MX-E2210-10	4 - 17	1PA-E4703-00	9 - 1	3C1-E7285-00	14 - 19	1PA-F171E-00-P2	19 - 22	2JK-F3114-00	22 - 11
2N4-23168-00	22 - 16	5MX-E2213-01	4 - 18	1PA-E4718-00	9 - 2	3C1-E7402-00	14 - 11	1PA-F171E-00-P3	19 - 22		22 - 27
	22 - 32	1PA-E2231-00	4 - 12	1PA-E4747-00	17 - 7	3C1-E7411-10	14 - 1	1PA-F1721-00	19 - 2	5BP-F3118-10	22 - 15
5TL-2341E-00	21 - 4	1PA-E2241-00	4 - 13	1PA-E4799-00	9 - 3	3C1-E7456-00	14 - 27	1PA-F1731-00-P0	19 - 14		22 - 31
5VC-23462-00	22 - 34	3C1-E2256-00	4 - 16	1PA-E5113-00	11 - 9	3C1-E7471-00	14 - 9	1PA-F1731-00-P1	19 - 14	1PA-F3126-00	22 - 2
50C-2536G-00	28 - 16	1PA-E2280-00	4 - 6	1PA-E5150-00	10 - 1	1PA-E8101-00	16 - 4	1PA-F1731-00-P2	19 - 14	1PA-F3136-00	22 - 18
36Y-2589H-00	30 - 6	1S7-E2288-00	4 - 7	1S7-E5351-00	7 - 3	1PA-E8110-00	16 - 9	1PA-F1731-00-P3	19 - 14	1PA-F3141-00	22 - 9
5BU-27234-00	32 - 17	1S7-E2405-00	6 - 5	3C1-E5362-00	11 - 17	5BP-E8112-10	16 - 14	1PA-F1741-00-P0	19 - 15		22 - 25
5D7-8183G-00	34 - 3	3C1-E240A-10	6 - 4	1PA-E5411-00	11 - 1	1EG-E8113-01	16 - 10	1PA-F1741-00-P1	19 - 15	5BP-F3144-00	22 - 5
1PA-E1102-00	1 - 1	1S7-E2413-00	6 - 2	3C1-E5418-00	11 - 10	3C1-E8115-00	16 - 11	1PA-F1741-00-P2	19 - 15		22 - 21
1S7-E111F-00	4 - 9	3C1-E2422-00	5 - 1	3C1-E5421-00	11 - 12	3C1-E8140-00	16 - 1	1PA-F1741-00-P3	19 - 15	5BP-F3145-00	22 - 3
1S7-E1133-10	1 - 2	1S7-E2428-00	5 - 3	3C1-E5441-00	4 - 19	3C1-E8337-00	16 - 3	1PA-F179E-00	23 - 25		22 - 19
1PA-E1166-00	8 - 31	3C1-E2443-00	5 - 13	3C1-E5451-00	11 - 2	3C1-E8511-00	15 - 4		41 - 23	2JK-F3149-01	22 - 14
3C1-E1181-01	1 - 14	1S7-E2450-01	5 - 7	3C1-E5461-00	11 - 13	3C1-E8512-00	15 - 5	1PA-F17F1-00	19 - 20		22 - 30
1S7-E1185-02	5 - 4	5YP-E2462-00	6 - 8	1PA-E5514-00	12 - 4	3C1-E8513-00	15 - 6		42 - 2	22W-F3156-L0	22 - 4
1PA-E1191-00	1 - 7	1PA-E2467-00	6 - 14	3C1-E5521-00	12 - 5	1PA-E8531-00	15 - 7	1PA-F17F1-10	19 - 20		22 - 20
1S7-E1193-00	1 - 10	3C1-E2481-00	6 - 15	1PA-E5524-00	12 - 8	1PA-E8540-00	15 - 1		42 - 11	509-F3158-L0	22 - 10
1S7-E1196-00	5 - 5	3C1-E2482-00	6 - 17	5YP-E5580-00	12 - 11	5TP-E8542-00	15 - 2	1PA-F17F1-20	19 - 20		22 - 26
1PA-E1311-00	1 - 18	5YP-E2671-00	6 - 7	5HV-E5583-00	12 - 12	1PA-F1110-00	17 - 1		42 - 20	1PA-F3170-00	22 - 7
1S7-E1351-00	1 - 19	5YP-E2675-00	6 - 6	3C1-E5598-00	4 - 15	1PA-F117K-00	24 - 10	1PA-F17F1-30	19 - 20		22 - 23
3C1-E1400-10	2 - 1	1PA-E3300-00	7 - 1	5YP-E5614-00	12 - 13	3C1-F118E-00	17 - 12		42 - 29	2JK-F3173-00	22 - 8
3C1-E1412-10	2 - 2	1PA-E3324-00	7 - 8	20P-E5666-00	12 - 1	3C1-F1338-00	17 - 11	1PA-F17F2-00	19 - 21		22 - 24
3C1-E1422-10	2 - 6	3C1-E3327-00	7 - 13	3C1-E6111-00	13 - 1	1PA-F137U-00	23 - 50		42 - 3	1PA-F3174-00	21 - 16
1PA-E1454-00	2 - 21	1S7-E3411-00	7 - 4	2S6-E6135-00	13 - 18	1PA-F137V-00	23 - 51	1PA-F17F2-10	19 - 21	45P-F317J-00	21 - 18
3C1-E1496-00	2 - 16	1S7-E3440-00	7 - 7	3C1-E6144-00	13 - 16	1PA-F137W-00-P0	23 - 40		42 - 12	31B-F3181-00	22 - 13
3C1-E1549-00	2 - 7	3C1-E3447-00	7 - 9	1PA-E6150-00	13 - 5	1PA-F137W-00-P1	23 - 40	1PA-F17F2-20	19 - 21		22 - 29
1PA-E1603-00	2 - 14	1PA-E3556-00	8 - 2	50C-E6154-00	13 - 6	1PA-F137W-00-P2	23 - 40		42 - 21	3C1-F3340-00	22 - 33
3C1-E1631-11	2 - 11	1PA-E3557-00	8 - 11	50C-E6321-00	13 - 8	1PA-F137W-00-P3	23 - 40	1PA-F17F2-30	19 - 21	2JK-F3346-00	22 - 36
3C1-E1633-00	2 - 12	1PA-E3585-00	8 - 1	2S6-E6324-00	13 - 10	1PA-F137X-00-P0	23 - 41		42 - 30	1PA-F3411-00	21 - 2
3C1-E1651-11	2 - 5	1PA-E3635-00	8 - 3	1PA-E6331-00	13 - 9	1PA-F137X-00-P1	23 - 41	3C1-F1828-00	19 - 9	1PA-F3412-00	21 - 3
1S7-E1951-00	5 - 8	1PA-E3750-00	8 - 14	1S7-E6333-00	13 - 12	1PA-F137X-00-P2	23 - 41	1PA-F1871-00	19 - 6	5BP-F3416-00	21 - 5
1S7-E1952-02	5 - 9	1PA-E3767-00	8 - 13	3C1-E6344-00	13 - 17	1PA-F137X-00-P3	23 - 41	3C1-F1875-00	19 - 8	1PA-F3418-00	21 - 8
1S7-E2111-00	3 - 1	1PA-E3770-00	8 - 6	3C1-E6345-00	13 - 21	1PA-F144G-00	32 - 1	1PA-F2110-00	20 - 1	1PA-F3435-00	21 - 9
3C1-E2113-00	3 - 4	1PA-E3907-00	23 - 17	50C-E6351-00	13 - 11	1PA-F1511-00-3X	18 - 1	5BP-F2129-01	20 - 4	3KA-F3441-10	21 - 13
1PA-E2117-00	3 - 6	54P-E3915-00	23 - 18	3C1-E6356-10	13 - 15	1PA-F1511-00-4X	18 - 1	1PA-F2141-00	20 - 5	3KA-F3469-00	21 - 15
3S0-E2118-00	3 - 5	54P-E3938-00	8 - 7	1PA-E6357-00	13 - 22	1PA-F1511-00-5X	18 - 1	1PA-F2151-00	20 - 7	1PA-F3487-00	37 - 20
1PA-E2119-00	3 - 3	1PA-E3971-00	23 - 22	3C1-E6358-00	13 - 14	1PA-F1611-00	18 - 7	1PA-F2174-00	27 - 22	5BP-F3873-01	21 - 1
1S7-E2121-00	3 - 2	54P-E4137-00	8 - 8	2S6-E6371-02	13 - 7	1PA-F1621-00	18 - 8	1PA-F217A-00	20 - 8	5BP-F3875-00	22 - 35
5YP-E2126-00	3 - 7	54P-E4147-00	8 - 9	3C1-E6380-01	13 - 20	1PA-F163A-00	18 - 10	1PA-F217F-00	20 - 12	1PA-F4100-00-P0	23 - 1
1S7-E2151-00	3 - 8	5CA-E4147-00	8 - 10	1S7-E6777-00	13 - 13	1PA-F1650-00	20 - 15	3C1-F2184-00	20 - 3	1PA-F4100-10-P0	23 - 1
1S7-E2156-00	3 - 14	1PA-E4412-00	8 - 17	3C1-E7121-00	14 - 6	1PA-F1711-00	19 - 1	1PA-F2210-00	20 - 20	1PA-F4100-20-P0	23 - 1
5YP-E2157-00	4 - 8	3C1-E4419-00	8 - 25	3C1-E7131-00	14 - 5	1PA-F1717-00	23 - 39	3C1-F2327-00	17 - 10	1PA-F4100-30-P0	23 - 1
1FC-E2158-00	3 - 10	3C1-E441J-00	8 - 26	1PA-E7151-00	14 - 2	45P-F1717-00	20 - 19	1PA-F3102-00	22 - 1	1PA-F411F-00	23 - 5
	3 - 13	5TL-E443E-00	8 - 21	3C1-E7211-00	14 - 12	1PA-F171A-00-P0	23 - 26	1PA-F3103-00	22 - 17	1PA-F411J-00	23 - 37

NUMERICAL INDEX

PART NO.	REF. NO.	PART NO.	REF. NO.	PART NO.	REF. NO.	PART NO.	REF. NO.	PART NO.	REF. NO.	PART NO.	REF. NO.
1PA-F4129-00	23 - 32	1PA-F4255-00	42 - 9	1PA-F5386-00	27 - 17	1PA-F6243-00	29 - 3	54P-H2151-00	40 - 7	1PA-H3358-00	35 - 25
1PA-F412Y-00	23 - 4	1PA-F4255-10	23 - 3	1PA-F5388-00	27 - 21	1PA-F6246-00	29 - 7	3C1-H2310-01	40 - 1		35 - 33
1PA-F4139-00	23 - 33		42 - 18	1PA-F5443-00	27 - 10	1PA-F6280-00	29 - 14	1S7-H2370-00	40 - 3	1PA-H3371-00	41 - 25
1PA-F413B-00	23 - 55	1PA-F4255-20	23 - 3		43 - 3	1PA-F6290-00	29 - 15	1PA-H252C-00	40 - 12	1PA-H3500-00	36 - 1
1PA-F413Y-00	23 - 10		42 - 27	3C1-F5805-10	26 - 12	1PA-F6311-00	29 - 9	1PA-H2530-00	40 - 18	2S0-H3516-00	37 - 3
1PA-F4141-00	23 - 56	1PA-F4255-30	23 - 3	1PA-F580U-00	26 - 3	1PA-F6312-00	29 - 10	1PA-H2540-00	41 - 3	1PA-H3571-00	36 - 2
54P-F414G-00	23 - 20		42 - 36	1PA-F580W-00	28 - 3	1PA-F6335-00	29 - 12	1PA-H2545-00	40 - 16	1PA-H3572-00	36 - 3
1PA-F4244-00	23 - 46	1PA-F4312-00	23 - 24	50C-F5827-00	28 - 10	3RS-F6372-00	29 - 13	1PA-H2568-00	40 - 15	54P-H3591-00	41 - 6
	42 - 4	1PA-F4491-00	23 - 19	50C-F5828-00	28 - 11	3C1-F7111-00	31 - 8	1PA-H2576-00	41 - 15	1PA-H3755-00	41 - 9
1PA-F4244-10	23 - 46	1PA-F4595-00	23 - 23	50C-F582A-00	32 - 6	1PA-F7112-00	31 - 9	1PA-H2589-00	41 - 22	3KA-H3912-00	39 - 9
	42 - 13	1PA-F470J-00-P0	24 - 12	3C1-F582U-00	26 - 1	1PA-F7114-00	9 - 4	1PA-H2590-00	40 - 20	3KA-H3913-00	39 - 10
1PA-F4244-20	23 - 46	1PA-F470J-00-P1	24 - 12	1PA-F582W-00	28 - 1	1PA-F7211-00	31 - 34	3C1-H2599-00	41 - 20	3C1-H3922-00	30 - 9
	42 - 22	1PA-F470J-00-P2	24 - 12	3C1-F583T-03	30 - 2	3C1-F7216-00	31 - 37	5BP-H2910-10	39 - 7	3RS-H3936-00	41 - 14
1PA-F4244-30	23 - 46	1PA-F470J-00-P3	24 - 12	1PA-F583V-00	32 - 2	50C-F7222-00	32 - 5	3KA-H2911-00	39 - 8	3KA-H3945-00	39 - 12
	42 - 31	1PA-F470K-00-P0	24 - 13	1PA-F5852-00	32 - 10	1PA-F7262-00	31 - 35	5BP-H2917-00	39 - 11	1PA-H395W-00	39 - 6
1PA-F4245-00	23 - 47	1PA-F470K-00-P1	24 - 13	3C1-F5852-00	30 - 5	3C1-F7311-00	31 - 1	1PA-H3310-00	35 - 1	1PA-H3972-00	39 - 1
	42 - 5	1PA-F470K-00-P2	24 - 13	20P-F5854-00	32 - 12	5BP-F7411-00	31 - 16	5HV-H3311-00	35 - 2	1PA-H3975-00	39 - 4
1PA-F4245-10	23 - 47	1PA-F470K-00-P3	24 - 13	3RW-F5854-00	30 - 4	3C1-F7413-00	31 - 21		35 - 10	5BP-H3980-10	30 - 12
	42 - 14	1PA-F4730-00	24 - 1	3C1-F5855-00	30 - 8		31 - 29		35 - 19	2B5-H411V-00	37 - 10
1PA-F4245-20	23 - 47	1PA-F4731-00	24 - 2	1PA-F585B-00	32 - 11	3C1-F7431-00	31 - 38		35 - 27	1PA-H4130-00	37 - 24
	42 - 23	3C1-F4741-00	24 - 3	50C-F5866-00	32 - 7	3C1-F7441-00	31 - 39	3C1-H3318-00	35 - 17	1PA-H4300-00	37 - 1
1PA-F4245-30	23 - 47	45P-F4763-00	24 - 4	3RW-F5867-00	30 - 7	5BP-F7451-00	31 - 20		35 - 34	1PA-H430A-00	37 - 4
	42 - 32	1S7-F4768-00	24 - 7	3C1-F5872-00	30 - 1	3C1-F7452-00	31 - 14	1PA-H331E-00	35 - 6	1PA-H4312-00	37 - 9
1PA-F4246-00	23 - 48	1PA-F476U-00	24 - 14	1PA-F5873-00	32 - 23	5BP-F7461-00	31 - 28	1PA-H4320-00	35 - 9	1PA-H4314-00	37 - 2
	42 - 6	1PA-F476V-00	24 - 15	1PA-F587A-00	28 - 20	1PA-F7462-00	31 - 26	1PA-H3323-00	35 - 4	4NR-H4317-00	37 - 7
1PA-F4246-10	23 - 48	1S7-F4780-00	24 - 6	1PA-F5886-00	30 - 16	1PA-F8100-00	17 - 13		35 - 29	54D-H4335-00	37 - 5
	42 - 15	1PA-F478E-00	24 - 9	1PA-F5887-00	32 - 26	1PA-F8351-00-P0	37 - 14	1PA-H3328-00	35 - 5	1PA-H4365-00	37 - 6
1PA-F4246-20	23 - 48	3C1-F510C-00	25 - 2	1PA-F5894-00	32 - 9	1PA-F8351-00-P1	37 - 14		35 - 13	3S0-H4374-00	37 - 11
	42 - 24	1PA-F5168-00-0X	25 - 1	1CK-F5895-00	32 - 15	1PA-F8351-00-P2	37 - 14		35 - 22	54D-H4397-00	37 - 8
1PA-F4246-30	23 - 48	1PA-F5168-00-1X	25 - 1	50C-F589A-00	32 - 16	1PA-F836B-00	19 - 27		35 - 30	1PA-H4704-00	38 - 5
	42 - 33	1PA-F5168-10-0X	25 - 1	50C-F5914-00	28 - 8		37 - 19	1PA-H332E-00	35 - 14	1PA-H4710-00	38 - 1
1PA-F4247-00	23 - 49	1PA-F5168-10-2X	25 - 1	50C-F5916-00	28 - 18	1PA-F8381-00	37 - 18	1PA-H332M-00	35 - 12	4AC-H4714-00	38 - 2
	42 - 7	1PA-F5168-20-0X	25 - 1	50C-F5917-00	28 - 13	1PA-H1410-00	33 - 2		35 - 21	1PA-H472C-00	38 - 3
1PA-F4247-10	23 - 49	1PA-F5168-20-1X	25 - 1	5YP-F5917-00	26 - 8	1PA-H1450-00	33 - 1	1PA-H3330-00	35 - 18	1PA-H4735-00	38 - 4
	42 - 16	3C1-F5181-00	25 - 8	50C-F5919-00	28 - 6	5D7-H1800-01	34 - 1	1PA-H3333-00	35 - 7	3C1-H5130-00	41 - 27
1PA-F4247-20	23 - 49	1PA-F5186-00	25 - 7	5P0-F5919-00	26 - 10	3AY-H1801-00	34 - 2		35 - 15	1PA-H5546-00	41 - 2
	42 - 25	1PA-F530S-00	27 - 2	1PA-F5921-00	28 - 14	3AY-H1828-00	34 - 5		35 - 24	1PA-H591A-00	41 - 1
1PA-F4247-30	23 - 49	1PA-F5338-00-0X	27 - 1	5YP-F5924-00	26 - 11	1S7-H1861-00	34 - 4		35 - 32	1DY-H592A-00	41 - 8
	42 - 34	1PA-F5338-00-1X	27 - 1	5YP-F5925-01	26 - 9	5TP-H1940-00	41 - 13	1PA-H333A-00	35 - 3	5P0-W0041-00	30 - 3
1PA-F4254-00	23 - 2	1PA-F5338-10-0X	27 - 1	50C-F5933-00	28 - 17	3C1-H1950-00	41 - 16		35 - 28	1PA-W0042-00	32 - 3
	42 - 8	1PA-F5338-10-1X	27 - 1	50C-F5937-00	28 - 12	1PA-H1960-00	41 - 11	1PA-H333E-00	35 - 23	1PA-W0046-00	28 - 9
1PA-F4254-10	23 - 2	1PA-F5338-20-0X	27 - 1	5YP-F5937-00	26 - 7	14D-H2100-00	40 - 4	1PA-H3340-00	35 - 26	3GD-W0047-00	28 - 5
	42 - 17	1PA-F5338-20-1X	27 - 1	5YP-F5939-00	26 - 13	14D-H2100-10	40 - 4	1PA-H334A-00	35 - 11	3C1-W0047-01	26 - 5
1PA-F4254-20	23 - 2	45P-F5364-00	27 - 4	50C-F5961-00	28 - 15	1PA-H2116-00	40 - 8		35 - 20	4C9-W0048-00	26 - 6
	42 - 26	3C1-F5366-00-33	27 - 6	1PA-F6111-00	29 - 1	3C1-H2131-00	40 - 5	1PA-H334E-00	35 - 31	50C-W0048-00	28 - 7
1PA-F4254-30	23 - 2	1PA-F5377-00	27 - 9	1PA-F6240-00	29 - 2	5TL-H2131-00	24 - 5	1PA-H3350-00	41 - 24	50C-W0057-00	28 - 4
	42 - 35	1PA-F5381-00	27 - 15	1DY-F6241-00	29 - 6	45P-H2133-00	39 - 5	1PA-H3358-00	35 - 8	3C1-W0057-01	26 - 4
1PA-F4255-00	23 - 3	1PA-F5383-00	27 - 16	1PA-F6242-00	29 - 5	1PA-H2150-00	40 - 6		35 - 16	1PA-WE441-00	8 - 16

NUMERICAL INDEX

PART NO.	REF. NO.	PART NO.	REF. NO.	PART NO.	REF. NO.	PART NO.	REF. NO.	PART NO.	REF. NO.	PART NO.	REF. NO.
1PA-WF01A-00	43 - 1	90179-08148	39 - 16	90269-06812	24 - 20	90467-12800	8 - 22	9131L-08030	21 - 10	93306-252XU	2 - 24
1PA-WF070-00	42 - 1	90179-10805	17 - 4	90280-03017	2 - 10	90467-13064	8 - 32		21 - 14	93306-252Y9	2 - 24
1PA-WF070-10	42 - 10		20 - 13	90282-05031	2 - 26	90467-20804	8 - 24	91401-20012	16 - 13	93306-252YL	14 - 8
1PA-WF070-20	42 - 19	90179-12802	13 - 4	90338-15802	17 - 8	90467-23802	8 - 28		32 - 20	93306-253X6	2 - 25
1PA-WF070-30	42 - 28	90179-14001	13 - 19	90338-16008	8 - 27	90480-01558	19 - 4	91401-25015	31 - 24	93306-301XE	25 - 3
1PA-XH250-00	40 - 9	90179-25810	21 - 6	90338-18122	17 - 9		19 - 19		31 - 32	93306-305X7	2 - 9
90105-08850	1 - 11	90183-050A7	37 - 16	90338-30802	12 - 3		23 - 38		31 - 43	93306-305XJ	2 - 8
90105-10006	21 - 11	90183-05823	23 - 53	90340-12813	1 - 3		23 - 42	91401-30030	31 - 11	93306-305XK	2 - 9
90105-10855	17 - 2		24 - 19	90340-14805	11 - 5		38 - 7	91810-14809	1 - 15	93306-305YF	2 - 8
90105-10886	17 - 3	90183-06818	23 - 45	90340-32810	11 - 7	90480-01803	6 - 13		1 - 16	93306-906Y4	4 - 2
90105-10887	20 - 11	90183-06822	8 - 29	90387-06144	6 - 12	90480-10623	23 - 43		10 - 2	93310-325X1	12 - 9
90105-10888	31 - 3	90201-05043	41 - 29	90387-06205	18 - 2	90480-12805	18 - 3		11 - 3	93310-528YD	2 - 4
90109-06172	18 - 9	90201-05827	36 - 6	90387-06890	23 - 13	90480-12823	23 - 31		11 - 14	93315-112Y8	13 - 24
90109-06212	19 - 7	90201-06880	6 - 11	90387-06892	23 - 6	90480-13567	38 - 6	92012-08025	32 - 21	93315-317Y1	20 - 9
90109-06279	16 - 2	90201-08066	32 - 19	90387-068D4	37 - 26	90480-13867	23 - 30	92902-06200	16 - 12	93317-218Y1	20 - 2
90109-06577	30 - 10	90201-08609	1 - 12	90387-08085	24 - 16	90480-14004	36 - 5	92902-08600	27 - 23	93410-20038	14 - 4
90109-08087	28 - 2	90201-08612	9 - 8	90387-08813	17 - 6	90480-14101	37 - 25	92902-10600	31 - 5	93410-22039	14 - 16
90110-05806	23 - 15	90201-08871	24 - 18	90387-09803	20 - 16	90480-15363	6 - 9	93101-10843	11 - 19	93450-16115	2 - 13
90110-08803	31 - 15	90201-10118	30 - 15	90387-10003	31 - 4	90480-15483	23 - 7	93102-12862	13 - 25	93501-04830	31 - 41
	31 - 27		32 - 25	90387-10814	20 - 10	90480-17801	18 - 5	93102-12891	16 - 8	93505-16844	13 - 23
90110-10026	31 - 17	90201-105E8	12 - 6	90387-15810	2 - 23	90480-18549	23 - 12	93102-20892	14 - 25	93604-08800	2 - 20
90111-06137	18 - 4	90201-12019	13 - 3	90387-17804	14 - 13	90501-030A0	12 - 14	93103-10801	5 - 2	93605-06800	4 - 5
90111-06807	9 - 5		33 - 6	90401-10812	30 - 14	90501-06022	15 - 3	93106-17801	20 - 14	93608-30839	16 - 7
90111-06842	37 - 27	90201-15030	27 - 19		32 - 24	90501-06800	15 - 8	93106-20814	25 - 4	93822-14815	14 - 26
90111-08815	26 - 2	90201-15821	2 - 17	90430-06014	1 - 5	90501-12743	31 - 40	93106-22808	27 - 5		43 - 2
90116-08826	27 - 11	90201-16813	31 - 10		1 - 9	90501-16800	2 - 19	93106-26815	27 - 8	93900-00828	25 - 6
90119-06137	18 - 11	90201-173F4	14 - 22		1 - 21	90501-18576	7 - 5	93210-09806	4 - 3		27 - 14
	19 - 3	90201-173U5	31 - 19	90430-10802	41 - 7	90506-28800	31 - 2	93210-108H5	39 - 18	94109-17805	25 - 5
	19 - 17	90201-20814	14 - 21	90445-08831	19 - 10	90506-35812	31 - 12	93210-148F8	11 - 6	94109-17806	25 - 5
	32 - 22	90201-20821	13 - 28	90445-08832	19 - 11	90508-183B9	31 - 25	93210-15620	32 - 8	94112-17804	27 - 13
90119-06209	8 - 30	90201-25290	12 - 10	90445-12804	6 - 19		31 - 33	93210-19809	5 - 16	94112-17805	27 - 13
90119-06234	23 - 8	90201-261L1	29 - 4	90445-21848	31 - 7	90508-32837	16 - 5	93210-198F9	11 - 18	94568-E0122	27 - 20
90119-068B9	18 - 6	90202-04802	37 - 21		31 - 13	90520-03819	23 - 27	93210-21801	41 - 4		43 - 4
90123-08046	39 - 17	90202-26142	21 - 7	90450-27805	6 - 16	90520-05014	23 - 34	93210-26805	34 - 6	94568-F9096	4 - 11
90149-06156	40 - 13	90206-17084	31 - 18		6 - 18	90520-05815	19 - 24	93210-32807	8 - 4	94700-00872	1 - 13
90149-06829	4 - 14	90208-20003	13 - 27	90450-39805	8 - 33	90520-05816	19 - 23	93210-328G3	11 - 8	94700-00873	1 - 13
90149-10802	26 - 14	90209-10020	21 - 12	90450-48803	8 - 15	90520-05817	19 - 25	93210-34802	7 - 6	95022-06010	1 - 4
90154-05043	37 - 17	90209-17285	14 - 3	90462-08812	37 - 28	90520-15802	23 - 28	93210-54805	7 - 12		1 - 20
90159-06054	24 - 11	90209-18208	14 - 15	90464-14803	40 - 19	90520-15808	37 - 15	93210-84801	5 - 6		4 - 10
90159-06860	19 - 26	90214-10800	2 - 18	90464-14807	19 - 13	91312-05010	23 - 16	93306-000Y3	5 - 10		14 - 28
	23 - 29	90215-10284	2 - 27	90464-20031	41 - 19		23 - 21	93306-001X6	4 - 4		24 - 8
	23 - 44	90240-08005	32 - 18	90464-20822	41 - 21	91312-06014	41 - 10	93306-003Y7	14 - 23	95022-06012	5 - 12
	23 - 54	90240-08144	31 - 23	90464-25160	37 - 13	91312-06016	33 - 4	93306-003YV	14 - 23		7 - 14
	40 - 17		31 - 42	90464-36800	41 - 17	91312-06020	12 - 15	93306-004XV	27 - 7		21 - 17
90163-05803	8 - 20	90240-08145	31 - 31	90464-50800	41 - 18		31 - 36	93306-054YM	14 - 7	95022-06016	11 - 11
90170-10012	2 - 28	90269-06812	18 - 12	90467-08003	19 - 12	91312-06025	33 - 3	93306-203XK	2 - 25		30 - 17
90179-05849	23 - 36		19 - 5	90467-10805	6 - 20	91312-06030	29 - 8	93306-204YS	14 - 24		41 - 12
	37 - 22		19 - 16	90467-12085	32 - 14	91312-06100	1 - 17	93306-252X7	27 - 3	95022-06020	1 - 8

NUMERICAL INDEX

PART NO.	REF. NO.	PART NO.	REF. NO.	PART NO.	REF. NO.	PART NO.	REF. NO.	PART NO.	REF. NO.
95022-06020	4 - 20	97602-05208	40 - 10						
	6 - 3	97702-30016	36 - 4						
	7 - 10	97702-50012	19 - 18						
	8 - 5		23 - 52						
95022-06025	5 - 11	97702-50014	36 - 7						
	5 - 14	98502-05012	29 - 11						
95022-06040	10 - 6	98502-05014	31 - 22						
	11 - 4		31 - 30						
	11 - 15	98502-05016	41 - 5						
95022-06045	10 - 4	98502-05025	7 - 2						
95022-06050	5 - 15	9850N-05030	39 - 3						
	11 - 16	9850N-05040	39 - 2						
95022-06055	10 - 3	98512-06012	14 - 10						
95022-06070	10 - 5	98702-03008	39 - 13						
95022-06080	7 - 11	98707-04045	32 - 13						
95022-06090	11 - 20	98902-05016	23 - 35						
95027-06025	30 - 13	98907-05020	37 - 23						
95301-08700	32 - 4	99002-10600	16 - 6						
95302-08600	27 - 24	99009-10400	12 - 7						
95602-05100	41 - 28	99009-17400	12 - 2						
95602-06100	30 - 11	99009-20500	13 - 26						
	39 - 14								
95602-08200	27 - 12								
95602-12200	20 - 6								
	25 - 9								
95602-14200	27 - 18								
95612-08640	1 - 6								
95612-10100	31 - 6								
95702-08500	9 - 7								
95702-12500	33 - 5								
95802-06012	37 - 12								
	40 - 14								
	41 - 26								
95812-06014	20 - 17								
	23 - 9								
95812-06020	20 - 18								
	40 - 11								
95812-06030	8 - 12								
	23 - 14								
95812-08012	17 - 5								
95812-08040	9 - 9								
95812-10030	28 - 19								
95822-06010	23 - 11								
95822-06025	6 - 10								
95822-08025	24 - 17								
97002-06016	40 - 2								
97012-06020	16 - 15								
97507-06525	39 - 15								